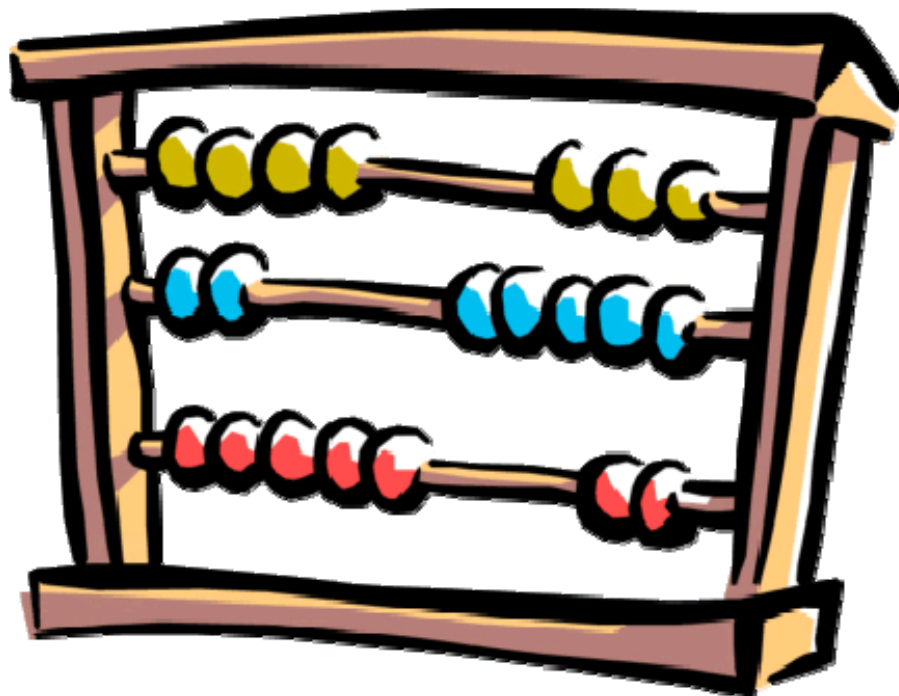


Utah Education Association Research Bulletin



Teacher Salary Schedules & Comparisons 2007-08



Volume MMVIII
Number 5
May 2008

TEACHER SALARY SCHEDULES AND COMPARISON *RESEARCH BULLETIN*

of the

Utah Education Association

by

**Courtney White, Director of Research
Carrie Call, Research Associate**

REPRODUCTION OF MATERIALS

Address all communications and requests to the:

Research Department
Utah Education Association
875 East 5180 South
Murray, Utah 84107

UEA committees and affiliated associations may all reproduce excerpts from the "Bulletin" in their official publications without authorization other than this notice. However, when quotations are used in other publications, or sold commercially by individuals, organizations, or corporations, written permission must be obtained.

In all cases, reproduction of the "Research Bulletin" materials must include the usual credit line.

UEA "Research Bulletins" are issued on an irregular schedule to interested members of the UEA. Others who wish to receive each issue may place a standing order for all UEA "Research Bulletins" at \$16.25 per year. Bills will be rendered for each report.

Single copies	\$5.00
2-9 copies	10% discount
10 or more	20% discount

All checks should be made payable to the Utah Education Association.

© Copyright 2008
by the
Utah Education Association

TEACHER SALARY SCHEDULES AND COMPARISONS

2007 - 2008

Table of Contents

INTRODUCTION.....	v
HIGHLIGHTS	vi
SECTION A. CHANGES IN SALARY SCHEDULES APPLICABLE TO THE 2007-2008 SCHOOL YEAR	1
TABLE 1 Bachelor's Degree Salary Schedule Changes.....	3
TABLE 2 Ranking of Bachelor's Degree Salary Schedules	4
TABLE 3 Difference between Bachelor's Degree Beginning Salary and Top Salary	5
TABLE 4 Master's Degree Salary Schedule Changes	6
TABLE 5 Ranking of Master's Degree Salary Schedules.....	7
TABLE 6 Difference between Master's Degree Beginning Salary and Top Salary.....	8
SECTION B. BASIC FEATURES OF SALARY SCHEDULES IN UTAH SCHOOL DISTRICTS, 2007-2008.....	9
TABLE 7 Dollar Value of a Master's Degree	10
TABLE 8 Salary Schedule Steps, 2004-05 through 2007-08	11
TABLE 9 Percent of Increase from Bachelor's Minimum to Master's Maximum	12
FIGURE 1 Graphic Comparison of Salary Schedule Minimum and Maximum for Bachelor's and Master's Degrees	13-14
FIGURE 2 Beginning Monthly Salaries.....	15
FIGURE 3 Maximum Monthly Salaries.....	16
SECTION C. LIFETIME EARNINGS	17
TABLE 10 Twenty Year Earnings – Bachelor's Degree	18
TABLE 11 Twenty Year Earnings – Master's Degree	19
TABLE 12 Twenty Year Earnings on Various Salary Lanes	20-21
TABLE 13 Historical Rank – Bachelor's Degree – 20-Year Lifetime Earnings.....	22
TABLE 14 Historical Rank – Master's Degree – 20-Year Lifetime Earnings	23
SECTION D. AVERAGE SALARY ANALYSIS AND SCHOOL DISTRICT BREAKDOWN	25
TABLE 15 Average Minimum and Maximum Salaries, 1972-73 - 2007-08.....	26
TABLE 16 Ten Year Teacher Salary Analysis.....	27
SECTION E. DISTRICT SALARY SCHEDULES.....	29
Index	31
Teacher Salary Schedules.....	32-72

INTRODUCTION

This bulletin is designed to assist in moving forward toward better salaries for school personnel. It updates much of the data found in previous salary annuals, and contains many of the same types of tables and charts in an attempt to dramatize or graphically portray important findings or elements deserving special consideration.

AIMS AND METHODS

As in the past, the major aim of the annual salary bulletin is to provide a reservoir of useful information for local education associations in their annual efforts to obtain needed adjustments in existing salary schedules. Some historical information is presented to give perspective on trends in the various schedules throughout the state. The salary data for this study were obtained from data submitted to the UEA by local school district administrations and local education associations.

ACKNOWLEDGEMENT

We would like to recognize and thank the District, UniServ, and Association personnel who cooperated so willingly in providing the individual district statistical data that enabled us to make this report complete.

HIGHLIGHTS

ALLOCATIONS

The total increase for the Minimum School Program provided by the 2008 Legislature was \$275 million or 9.9%.

STATE AVERAGES

For 2007-08, the average monthly beginning salary for teachers with a bachelor's degree is \$2,595. Beginning bachelor's degree monthly salaries range from a low of \$2,404 (Grand) to a high of \$2,914 (SLC), while the average monthly maximum master's degree salary increased to \$4,495. Maximum master's degree monthly salaries range from a low of \$4,137 (North Sanpete), to a high of \$5,298 (Park City).

SECTION A

CHANGES IN SALARY SCHEDULES APPLICABLE TO THE SCHOOL YEAR

District-to-district comparisons for the bachelor's degree schedules are reported in Tables 1 through 3, and those changes made in the master's degree schedules are reported in Tables 4 through 6.

The average schedule increase for a bachelor's degree lane (Table 1) was 8% or \$2,491 per year. The minimum lane increase was 9.67% or \$2,792 while the maximum lane increase was 3.45% or \$1,731 per year.

The average master's degree lane (Table 4) increased 1.13% or \$3,849. The lowest master's degree lane increase was 1.06% or \$1,788. The maximum master's degree lane increase was 1.14% or \$6,698. One should remember that these increases are the measured differences between schedules, not what an individual may receive.

This page left intentionally blank

TABLE 1
BACHELOR'S DEGREE SALARY SCHEDULE CHANGES 2007-2008
WITH COMPARITIVE FIGURES FOR 2007-2008

DISTRICT	2007-2008		2006-2007		MINIMUM INCREASE			MAXIMUM INCREASE		
	MIN	MAX	MIN	MAX	\$ AMOUNT	2007- 2008 %	2006- 2007 %	\$ AMOUNT	2007- 2008 %	2006- 2007 %
ALPINE			\$26,798	\$42,877			3.00%			3.00%
BEAVER	\$30,610	\$41,989	28,458	39,758	\$2,152	7.03%	3.29%	\$2,231	5.31%	3.29%
BOX ELDER			26,067	40,517			3.00%			3.00%
CACHE			26,255	44,608			5.00%			5.00%
CARBON			27,410	41,623			4.00%			4.00%
DAGGETT	30,491	44,766								
DAVIS	31,092	49,463	29,143	45,907	1,949	6.27%	4.25%	3,556	7.19%	4.25%
DUCHESNE			27,397	36,800			6.00%			6.00%
EMERY	30,720	49,510	28,460	45,210	2,260	7.36%	5.50%	4,300	8.69%	5.50%
GARFIELD	30,471	43,870								
GRAND	28,859	42,533	26,549	40,035	2,310	8.00%	2.00%	2,498	5.87%	2.00%
GRANITE	31,604	47,687	28,939	44,626	2,665	8.43%	5.00%	3,061	6.42%	5.00%
IRON			28,684	39,588			4.50%			4.50%
JORDAN	31,672	43,643	27,859	39,854	3,813	12.04%	5.60%	3,789	8.68%	5.60%
JUAB	29,090	35,562	28,243	34,527	847	2.91%	4.50%	1,035	2.91%	4.50%
KANE			30,561	41,314			5.50%			5.50%
LOGAN	31,252	43,300	27,408	38,928	3,844	12.30%	4.00%	4,372	10.10%	4.00%
MILLARD			28,525	48,410			5.25%			5.25%
MORGAN			27,888	40,074			4.75%			4.75%
MURRAY	33,492	43,539	31,268	41,224	2,224	6.64%	5.00%	2,315	5.32%	5.00%
NEBO	28,923	50,141	26,466	45,441	2,457	8.49%	3.25%	4,700	9.37%	3.25%
N. SANPETE	29,798	41,489	27,898	35,321	1,900	6.38%	4.63%	6,168	14.87%	4.63%
N. SUMMIT	31,095	44,175	28,171	40,809	2,924	9.40%	4.50%	3,366	7.62%	4.50%
OGDEN	32,123	49,737	29,797	47,173	2,326	7.24%	3.75%	2,564	5.16%	3.75%
PARK CITY	34,423	45,879	31,617	44,543	2,806	8.15%	1.00%	1,336	2.91%	1.00%
PIUTE										
PROVO	29,329	38,500								
RICH	30,360	41,199	27,448	38,127	2,912	9.59%	3.50%	3,072	7.46%	3.50%
SLC	34,968	48,905	32,873	46,740	2,095	5.99%	5.00%	2,165	4.43%	5.00%
SAN JUAN			32,567	48,007			4.00%			4.00%
SEVIER	29,335	39,768	29,191	39,576	144	0.49%	5.00%	192	0.48%	5.00%
S. SANPETE	31,259	39,669	28,759	37,169	2,500	8.00%	5.00%	2,500	6.30%	5.00%
S. SUMMIT	34,105	46,280	31,945	44,060	2,160	6.33%	3.50%	2,220	4.80%	3.50%
TINTIC										
TOOELE	31,244	48,893	27,185	43,933	4,059	12.99%	7.02%	4,960	10.14%	7.02%
UINTAH			28,747	42,036			4.00%			4.00%
USDB			27,735	45,506			2.82%			2.82%
WASATCH	30,989	38,337	28,069	35,168	2,920	9.42%	4.00%	3,169	8.27%	4.00%
WASHINGTON	30,496	39,801	29,470	38,462	1,026	3.36%	4.40%	1,339	3.36%	4.40%
WAYNE										
WEBER	31,949	49,158	29,014	45,968	2,935	9.19%	4.25%	3,190	6.49%	4.25%
AVERAGE	\$31,144	\$44,146	\$28,653	\$41,826	2,491	8.00%	4.30%	2,320	5.26%	4.30%
HIGH	34,968	50,141	32,873	48,410	1,550	4.50%	7.02%	1,731	3.45%	7.02%
LOW	28,859	35,562	26,067	34,527	2,792	9.67%	1.00%	3,810	9.94%	1.00%

TABLE 2
RANKING OF BACHELOR'S DEGREE
MINIMUM AND MAXIMUM SALARY SCHEDULE 2007-2008

DISTRICT	RANK	MINIMUM AMOUNT	DISTRICT	RANK	MAXIMUM AMOUNT
SLC	1	\$34,968	NEBO	1	\$50,141
PARK CITY	2	\$34,423	OGDEN	2	\$49,737
S. SUMMIT	3	\$34,105	EMERY	3	\$49,510
MURRAY	4	\$33,492	DAVIS	4	\$49,463
OGDEN	5	\$32,123	WEBER	5	\$49,158
WEBER	6	\$31,949	SLC	6	\$48,905
JORDAN	7	\$31,672	TOOELE	7	\$48,893
GRANITE	8	\$31,604	GRANITE	8	\$47,687
S. SANPETE	9	\$31,259	S. SUMMIT	9	\$46,280
LOGAN	10	\$31,252	PARK CITY	10	\$45,879
TOOELE	11	\$31,244	DAGGETT	11	\$44,766
			N. SUMMIT	12	\$44,175
STATE AVERAGE		\$31,144	STATE AVERAGE		\$44,146
N. SUMMIT	12	\$31,095	GARFIELD	13	\$43,870
DAVIS	13	\$31,092	JORDAN	14	\$43,643
WASATCH	14	\$30,989	MURRAY	15	\$43,539
EMERY	15	\$30,720	LOGAN	16	\$43,300
BEAVER	16	\$30,610	GRAND	17	\$42,533
WASHINGTON	17	\$30,496	BEAVER	18	\$41,989
DAGGETT	18	\$30,491	N. SANPETE	19	\$41,489
GARFIELD	19	\$30,471	RICH	20	\$41,199
RICH	20	\$30,360	WASHINGTON	21	\$39,801
N. SANPETE	21	\$29,798	SEVIER	22	\$39,768
SEVIER	22	\$29,335	S. SANPETE	23	\$39,669
PROVO	23	\$29,329	PROVO	24	\$38,500
JUAB	24	\$29,090	WASATCH	25	\$38,337
NEBO	25	\$28,923	JUAB	26	\$35,562
GRAND	26	\$28,859	ALPINE	27	
ALPINE	27		BOX ELDER	28	
BOX ELDER	28		CACHE	29	
CACHE	29		CARBON	30	
CARBON	30		DUCHESNE	31	
DUCHESNE	31		IRON	32	
IRON	32		KANE	33	
KANE	33		MILLARD	34	
MILLARD	34		MORGAN	35	
MORGAN	35		PIUTE	36	
PIUTE	36		SAN JUAN	37	
SAN JUAN	37		TINTIC	38	
TINTIC	38		UINTAH	39	
UINTAH	39		USDB	40	
USDB	40		WAYNE	41	
WAYNE	41				

TABLE 3
 AMOUNT OF DIFFERENCE BETWEEN BEGINNING SALARY AND TOP SALARY
 FOR A BACHELOR'S DEGREE 2007-2008

DISTRICT	2007-08 AMOUNT	2006-07 AMOUNT	2007-08% INDEX PERCENT	2006-07% INDEX PERCENT
ALPINE		\$16,079.00		1.60%
BEAVER	\$11,379	\$11,300.00	1.01%	1.40%
BOX ELDER		\$14,450.00		1.61%
CACHE		\$18,353.00		1.78%
CARBON		\$14,213.00		1.56%
DAGGETT	\$14,275	\$0.00		1.48%
DAVIS	\$18,371	\$16,764.00	1.10%	1.60%
DUCHESNE		\$9,403.00		1.39%
EMERY	\$18,790	\$16,750.00	1.12%	1.61%
GARFIELD	\$13,399	\$0.00		1.47%
GRAND	\$13,674	\$13,486.00	1.01%	1.51%
GRANITE	\$16,083	\$15,687.00	1.03%	1.54%
IRON		\$10,904.00		1.48%
JORDAN	\$11,971	\$11,995.00	1.00%	1.47%
JUAB	\$6,472	\$6,284.00	1.03%	1.22%
KANE		\$10,753.00		1.35%
LOGAN	\$12,048	\$11,520.00	1.05%	1.42%
MILLARD		\$19,885.00		1.70%
MORGAN		\$12,186.00		1.59%
MURRAY	\$10,047	\$9,956.00	1.01%	1.32%
NEBO	\$21,218	\$18,975.00	1.12%	1.42%
N. SANPETE	\$11,691	\$7,423.00	1.57%	1.45%
N. SUMMIT	\$13,080	\$12,638.00	1.03%	1.75%
OGDEN	\$17,614	\$17,376.00	1.01%	1.55%
PARK CITY	\$11,456	\$12,926.00	.89%	1.41%
PIUTE		\$0.00		1.47%
PROVO	\$9,171	\$0.00		1.40%
RICH	\$10,839	\$10,679.00	1.01%	1.39%
SLC	\$13,937	\$13,867.00	1.01%	1.29%
SAN JUAN		\$15,440.00		1.56%
SEVIER	\$10,433	\$10,385.00	1.00%	1.42%
S. SANPETE	\$8,410	\$8,410.00	1.00%	1.48%
S. SUMMIT	\$12,175	\$12,115.00	1.00%	1.35%
TINTIC		\$0.00		1.42%
TOOELE	\$17,649	\$16,748.00	1.05%	1.62%
UINTAH		\$13,289.00		1.46%
USDB		\$17,771.00		1.64%
WASATCH	\$7,348	\$7,099.00	1.04%	1.48%
WASHINGTON	\$9,305	\$8,992.00	1.03%	1.50%
WAYNE		\$0.00		1.52%
WEBER	\$17,209	\$16,954.00	1.02%	1.58%
AVERAGE	\$13,002	\$11,245.24	1.16%	1.49%

TABLE 4
 MASTER'S DEGREE SALARY SCHEDULE CHANGES 2007-2008
 WITH COMPARITIVE FIGURES FOR 2006-2007

DISTRICT	2007-2008		2006-2007		MINIMUM INCREASE			MAXIMUM INCREASE		
	MINIMUM	MAXIMUM	MINIMUM	MAXIMUM	AMOUNT	2007-2008	2006-2007	AMOUNT	2007-2008	2006-2007
					\$	%	%	\$	%	%
ALPINE			\$27,505	\$52,575			3.00%			3.00%
BEAVER	\$33,634	\$50,693	30,460	47,522	\$3,174	1.10%	3.29%	\$3,171	1.07%	3.29%
BOX ELDER			27,414	47,801			3.00%			3.00%
CACHE			27,129	51,597			5.00%			5.00%
CARBON			27,820	44,414			4.00%			4.00%
DAGGETT	\$34,270	\$50,784	30,547		\$3,723	1.12%	4.00%			4.00%
DAVIS	\$34,889	\$55,474	31,596	53,366	\$3,293	1.10%	4.25%	\$2,108	1.04%	4.25%
DUCHESNE			28,656	47,328			6.00%			6.00%
EMERY	\$33,460	\$52,340	29,650	49,580	\$3,810	1.13%	5.50%	\$2,760	1.06%	5.50%
GARFIELD	\$34,937	\$54,476	31,072		\$3,865	1.12%	6.00%			6.00%
GRAND	\$32,626	\$49,813	29,671	47,214	\$2,955	1.10%	2.00%	\$2,599	1.06%	2.00%
GRANITE	\$35,209	\$56,283	30,910	53,010	\$4,299	1.14%	5.00%	\$3,273	1.06%	5.00%
IRON			30,536	49,892			4.50%			4.50%
JORDAN	\$34,834	\$58,099	29,187	51,401	\$5,647	1.19%	5.60%	\$6,698	1.13%	5.60%
JUAB	\$33,325	\$51,814	30,961	50,305	\$2,364	1.08%	4.50%	\$1,509	1.03%	4.50%
KANE			32,186	49,237			5.50%			5.50%
LOGAN	\$33,208	\$55,900	28,152	50,964	\$5,056	1.18%	4.00%	\$4,936	1.10%	4.00%
MILLARD			29,314	52,360			5.25%			5.25%
MORGAN			29,396	49,289			4.75%			4.75%
MURRAY	\$37,512	\$58,711	33,573	57,091	\$3,939	1.12%	5.00%	\$1,620	1.03%	5.00%
N. SANPETE	\$32,783	\$49,640	29,696	50,374	\$3,087	1.10%	3.25%	\$66	1.00%	3.25%
N. SUMMIT	\$32,730	\$51,260	28,470	47,502	\$4,260	1.15%	4.63%	\$3,758	1.08%	4.63%
NEBO	\$31,572	\$53,319	28,164	47,654	\$3,408	1.12%	4.50%	\$5,665	1.12%	4.50%
OGDEN	\$35,411	\$56,149	32,232	53,497	\$3,179	1.10%	3.75%	\$2,652	1.05%	3.75%
PARK CITY	\$38,524	\$63,570	35,024	61,718	\$3,500	1.10%	1.00%	\$1,852	1.03%	1.00%
PIUTE			29,835				4.00%			4.00%
PROVO	\$31,192	\$52,776	26,918		\$4,274	1.16%	3.50%			3.50%
RICH	\$33,685	\$52,847	29,685	49,603	\$4,000	1.13%	3.50%	\$3,244	1.07%	3.50%
S. SANPETE	\$34,515	\$51,592	30,490	48,150	\$4,025	1.13%	5.00%	\$3,442	1.07%	5.00%
S. SUMMIT	\$37,588	\$53,513	33,441	51,257	\$4,147	1.12%	4.00%	\$2,256	1.04%	4.00%
SLC	\$39,400	\$58,573	35,508	56,360	\$3,892	1.11%	5.00%	\$2,213	1.04%	5.00%
SAN JUAN			33,940	53,975			5.00%			5.00%
SEVIER	\$32,971	\$50,568	31,183	50,304	\$1,788	1.06%	3.50%	\$264	1.01%	3.50%
TINTIC			28,462				4.75%			4.75%
TOOELE	\$34,156	\$54,291	29,055	47,807	\$5,101	1.18%	7.02%	\$6,484	1.14%	7.02%
UINTAH			31,292	48,816			4.00%			4.00%
USDB			30,211	52,801			2.82%			2.82%
WASATCH	\$35,519	\$52,834	31,197	49,175	\$4,322	1.14%	4.00%	\$3,659	1.07%	4.00%
WASHINGTON	\$34,753	\$51,181	30,142	46,853	\$4,611	1.15%	4.40%	\$4,328	1.09%	4.40%
WAYNE			27,284				4.25%			4.25%
WEBER	\$36,296	\$55,863	31,940	52,574	\$4,356	1.14%	4.25%	\$3,289	1.06%	4.25%
AVERAGE	\$34,577	\$53,937	\$30,242	\$50,668	\$3,849	1.13%	4.30%	\$2,943	1.06%	4.30%
HIGH	\$39,400	\$63,570	35,508	61,718	\$5,647	1.19%	7.02%	\$6,698	1.14%	7.02%
LOW	\$31,192	\$49,640	26,918	44,414	\$1,788	1.06%	1.00%	\$66	1.00%	2.00%

TABLE 5
RANKING OF MASTER'S DEGREE
MINIMUM AND MAXIMUM SALARY SCHEDULE
2007-2008

DISTRICT	RANK	MINIMUM AMOUNT	DISTRICT	RANK	MAXIMUM AMOUNT
SLC	1	\$39,400	PARK CITY	1	\$63,570
PARK CITY	2	\$38,524	MURRAY	2	\$58,711
S. SUMMIT	3	\$37,588	SLC	3	\$58,573
MURRAY	4	\$37,512	JORDAN	4	\$58,099
WEBER	5	\$36,296	GRANITE	5	\$56,283
WASATCH	6	\$35,519	OGDEN	6	\$56,149
OGDEN	7	\$35,411	LOGAN	7	\$55,900
GRANITE	8	\$35,209	WEBER	8	\$55,863
GARFIELD	9	\$34,937	DAVIS	9	\$55,474
DAVIS	10	\$34,889	GARFIELD	10	\$54,476
JORDAN	11	\$34,834	TOOELE	11	\$54,291
WASHINGTON	12	\$34,753			
			STATE AVERAGE		\$53,937
STATE AVERAGE		\$34,577			
S. SANPETE	13	\$34,515	S. SUMMIT	12	\$53,513
DAGGETT	14	\$34,270	NEBO	13	\$53,319
TOOELE	15	\$34,156	RICH	14	\$52,847
RICH	16	\$33,685	WASATCH	15	\$52,834
BEAVER	17	\$33,634	PROVO	16	\$52,776
EMERY	18	\$33,460	EMERY	17	\$52,340
JUAB	19	\$33,325	JUAB	18	\$51,814
LOGAN	20	\$33,208	S. SANPETE	19	\$51,592
SEVIER	21	\$32,971	N. SUMMIT	20	\$51,260
N. SANPETE	22	\$32,783	WASHINGTON	21	\$51,181
N. SUMMIT	23	\$32,730	DAGGETT	22	\$50,784
GRAND	24	\$32,626	BEAVER	23	\$50,693
NEBO	25	\$31,572	SEVIER	24	\$50,568
PROVO	26	\$31,192	GRAND	25	\$49,813
ALPINE	27		N. SANPETE	26	\$49,640
BOX ELDER	28		ALPINE	27	
CACHE	29		BOX ELDER	28	
CARBON	30		CACHE	29	
DUCHESNE	31		CARBON	30	
IRON	32		DUCHESNE	31	
KANE	33		IRON	32	
MILLARD	34		KANE	33	
MORGAN	35		MILLARD	34	
PIUTE	36		MORGAN	35	
SAN JUAN	37		PIUTE	36	
TINTIC	38		SAN JUAN	37	
UINTAH	39		TINTIC	38	
USDB	40		UINTAH	39	
WAYNE	41		USDB	40	
			WAYNE	41	

TABLE 6
 AMOUNT OF DIFFERENCE BETWEEN BEGINNING SALARY AND TOP
 SALARY FOR A MASTER'S DEGREE
 2007-2008

DISTRICT	2007-2008 AMOUNT	2006-2007 AMOUNT	2007-2008 INDEX PERCENT	2006-2007 INDEX PERCENT
ALPINE		\$24,246		1.86%
BEAVER	\$17,059	\$16,060	1.06%	1.51
BOX ELDER		\$19,565		1.69
CACHE		\$23,111		1.81
CARBON		\$15,481		1.54
DAGGETT	\$16,514			1.47
DAVIS	\$20,585	\$20,427	1.01	1.62
DUCHESNE		\$16,953		1.56
EMERY	\$18,880	\$18,410	1.03	1.58
GARFIELD	\$19,539			1.59
GRAND	\$17,187	\$16,950	1.01	1.56
GRANITE	\$21,074	\$20,555	1.03	1.63
IRON		\$17,954		1.56
JORDAN	\$23,265	\$20,580	1.13	1.67
JUAB	\$18,489	\$17,951	1.03	1.55
KANE		\$15,281		1.45
LOGAN	\$22,692	\$21,684	1.05	1.74
MILLARD		\$21,507		1.70
MORGAN		\$18,334		1.59
MURRAY	\$21,199	\$21,839	0.97	1.62
N. SANPETE	\$16,857	\$21,311	0.79	1.73
N. SUMMIT	\$18,530	\$16,619	1.11	1.54
NEBO	\$21,747	\$17,903	1.21	1.60
OGDEN	\$20,738	\$20,459	1.01	1.59
PARK CITY	\$25,046	\$26,344	0.95	1.74
PIUTE				1.53
PROVO	\$21,584			1.75
RICH	\$19,162	\$18,879	1.01	1.63
S. SANPETE	\$17,077	\$16,135	1.06	1.51
S. SUMMIT	\$15,925	\$15,847	1.00	1.57
SLC	\$19,173	\$19,077	1.01	1.53
SAN JUAN		\$18,294		1.50
SEVIER	\$17,597	\$17,489	1.01	1.41
TINTIC				1.72
TOOELE	\$20,135	\$17,859	1.13	1.60
UINTAH		\$16,272		1.54
USDB		\$21,738		1.70
WASATCH	\$17,315	\$16,730	1.03	1.50
WASHINGTON	\$16,428	\$13,270	1.24	1.49
WAYNE				1.50
WEBER	\$19,567	\$19,277	1.02	1.58
AVERAGE	\$19,360	\$16,107	1.04%	1.60%

SECTION B

BASIC FEATURES OF SALARY SCHEDULES IN UTAH SCHOOL DISTRICTS 2007 - 2008

During the annual examination of salaries in Utah school districts, it is usually helpful to review the basic features of each district salary schedule in comparison with similar features in other districts. To facilitate this review, a rather detailed comparison of each major feature is presented in the following pages. Graphs or charts have been used in order to illustrate rankings or accentuate differences; thus a comparative number of increments or years to reach maximum salary, salary lanes for preparation recognition, and career or lifetime earnings.

Minimum Scheduled Salaries

Figure 2 shows a ranking of the districts according to beginning monthly salaries for teachers having a bachelor's degree (also refer to Table 2). All districts now provide a beginning monthly salary of \$2,405 or more, with an average statewide of \$2,595.

Maximum Scheduled Salaries

Maximum monthly salaries for teachers with a bachelor's degree are presented in Figure 3.

None of the districts now provide a maximum monthly salary of less than \$2,964. The average maximum monthly salary is \$3,679 statewide.

TABLE 7
DOLLAR VALUE OF A MASTER'S DEGREE FOR UTAH SCHOOL DISTRICTS
2007-2008

DISTRICT	MINIMUM			MONTHLY VALUE	MAXIMUM			MONTHLY VALUE
	B.A.	M.A.	DIFFER		B.A.	M.A.	DIFFER	
ALPINE								
BEAVER	\$30,610	\$33,634	\$3,024	\$252	\$41,989	\$50,693	\$8,704	\$725
BOX ELDER								
CACHE								
CARBON								
DAGGETT	\$30,491	\$34,270	\$3,779	\$315	\$44,766	\$50,784	\$6,018	\$502
DAVIS	\$31,092	\$34,889	\$3,797	\$316	\$49,463	\$55,474	\$6,011	\$501
DUCHESNE								
EMERY	\$30,720	\$33,460	\$2,740	\$228	\$49,510	\$52,340	\$2,830	\$236
GARFIELD	\$30,471	\$34,937	\$4,466	\$372	\$43,870	\$54,476	\$10,606	\$884
GRAND	\$28,859	\$32,626	\$3,767	\$314	\$42,533	\$49,813	\$7,280	\$607
GRANITE	\$31,604	\$35,209	\$3,605	\$300	\$47,687	\$56,283	\$8,596	\$716
IRON								
JORDAN	\$31,672	\$34,834	\$3,162	\$264	\$43,643	\$58,099	\$14,456	\$1,205
JUAB	\$29,090	\$33,325	\$4,235	\$353	\$35,562	\$51,814	\$16,252	\$1,354
KANE								
LOGAN	\$31,252	\$33,208	\$1,956	\$163	\$43,300	\$55,900	\$12,600	\$1,050
MILLARD								
MORGAN								
MURRAY	\$33,492	\$37,512	\$4,020	\$335	\$43,539	\$58,711	\$15,172	\$1,264
NEBO	\$28,923	\$31,572	\$2,649	\$221	\$50,141	\$53,319	\$3,178	\$265
N. SANPETE	\$29,798	\$32,783	\$2,985	\$249	\$41,489	\$49,640	\$8,151	\$679
N. SUMMIT	\$31,095	\$32,730	\$1,635	\$136	\$44,175	\$51,260	\$7,085	\$590
OGDEN	\$32,123	\$35,411	\$3,288	\$274	\$49,737	\$56,149	\$6,412	\$534
PARK CITY	\$34,423	\$38,524	\$4,101	\$342	\$45,879	\$63,570	\$17,691	\$1,474
PIUTE								
PROVO	\$29,329	\$31,192	\$1,863	\$155	\$38,500	\$52,776	\$14,276	\$1,190
RICH	\$30,360	\$33,685	\$3,325	\$277	\$41,199	\$52,847	\$11,648	\$971
SLC	\$34,968	\$39,400	\$4,432	\$369	\$48,905	\$58,573	\$9,668	\$806
SAN JUAN								
SEVIER	\$29,335	\$32,971	\$3,636	\$303	\$39,768	\$50,568	\$10,800	\$900
S. SANPETE	\$31,259	\$34,515	\$3,256	\$271	\$39,669	\$51,592	\$11,923	\$994
S. SUMMIT	\$34,105	\$37,588	\$3,483	\$290	\$46,280	\$53,513	\$7,233	\$603
TINTIC								
TOOELE	\$31,244	\$34,156	\$2,912	\$243	\$48,893	\$54,291	\$5,398	\$450
UINTAH								
USDB								
WASATCH	\$30,989	\$35,519	\$4,530	\$378	\$38,337	\$52,834	\$14,497	\$1,208
WASHINGTON	\$30,496	\$34,753	\$4,257	\$355	\$39,801	\$51,181	\$11,380	\$948
WAYNE								
WEBER	\$31,949	\$36,296	\$4,347	\$362	\$49,158	\$55,863	\$6,705	\$559
AVERAGE	\$31,144	\$34,577	\$3,433	\$286	\$44,146	\$53,937	\$9,791	\$816

TABLE 8
SALARY SCHEDULE STEPS
2004-05 THROUGH 2007-08

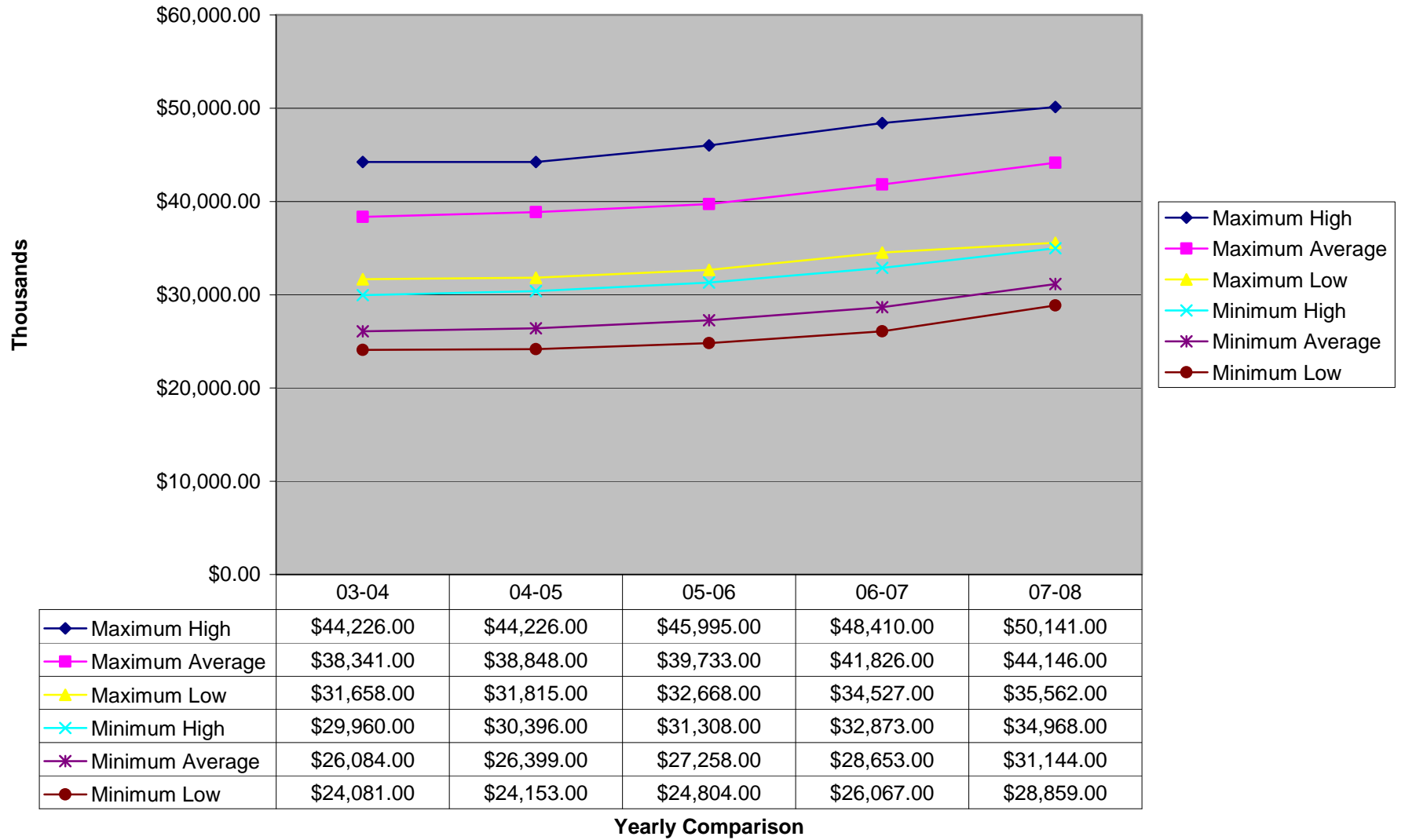
DISTRICT	BACHELOR'S DEGREE				MASTER'S DEGREE			
	2007-08	2006-07	2005-06	2004-05	2007-08	2006-07	2005-06	2004-05
ALPINE		1-12	1-12	1-12		1-18	1-18	1-18
BEAVER	3-13	1-13	1-13	1-13	3-20	1-20	1-20	1-20
BOX ELDER		1-20	1-20	1-20		1-20	1-20	1-20
CACHE		1-14	1-14	1-14		1-20	1-20	1-20
CARBON		1-17	1-17	1-17		1-17	1-17	1-17
DAGGETT	1-15		1-15	1-15	1-20		1-20	1-20
DAVIS	1-20	1-20	1-20	1-20	1-20	1-20	1-20	1-20
DUCHESNE		1-19	1-19	1-19		1-19	1-19	1-19
EMERY	1-18	1-18	1-18	1-18	1-18	1-18	1-18	1-18
GARFIELD	1-13		1-13	1-13	1-20		1-20	1-20
GRAND	1-16	1-16	1-16	1-16	1-16	1-16	1-16	1-16
GRANITE	1-20	1-20	1-20	1-20	1-20	1-20	1-20	1-20
IRON		1-20	1-20	1-20		1-20	1-20	1-20
JORDAN	1-12	1-20	1-20	1-20	1-15	1-20	1-20	1-20
JUAB	1-8	1-8	1-8	1-8	1-17	1-17	1-17	1-17
KANE		1-11	1-11	1-11		1-15	1-15	1-15
LOGAN	1-10	1-10	1-10	1-10	1-15	1-20	1-20	1-20
MILLARD		1-14	1-14	1-14		1-14	1-14	1-14
MORGAN		1-14	1-20	1-20		1-20	1-20	1-20
MURRAY	1-9	1-17	1-17	1-17	1-14	1-17	1-17	1-17
NEBO	1-15	1-15	1-15	1-15	1-20	1-20	1-20	1-20
N. SANPETE	1-9	1-9	1-9	1-9	1-20	1-20	1-20	1-20
N.SUMMIT	1-20	1-12	1-12	1-12	1-20	1-20	1-20	1-20
OGDEN	1-16	1-16	1-15	1-15	1-16	1-16	1-15	1-15
PARK CITY	1-20	1-17	1-17	1-17	1-20	1-20	1-20	1-20
PIUTE			1-12	1-12			1-20	1-20
PROVO	1-20		1-8	1-8	1-20		1-20	1-20
RICH	1-11	1-11	1-11	1-11	1-20	1-20	1-20	1-20
SLC	1-9	1-9	1-9	1-9	1-12	1-12	1-12	1-12
SAN JUAN		1-17	1-17	1-17		1-19	1-19	1-19
SEVIER	1-11	1-11	1-11	1-11	1-20	1-20	1-20	1-20
S. SANPETE	1-9	1-9	1-9	1-9	1-20	1-20	1-20	1-20
S. SUMMIT	1-16	1-16	1-15	1-15	1-20	1-20	1-20	1-19
TINTIC			1-18	1-8			1-18	1-18
TOOELE	1-14	1-14	1-14	1-14	1-14	1-14	1-14	1-14
UINTAH		1-13	1-13	1-13		1-15	1-15	1-15
USDB		1-20	1-20	1-20		1-20	1-20	1-20
WASATCH	1-8	1-8	1-8	1-14	1-13	1-13	1-13	1-14
WASHINGTON	1-9	1-9	1-9	1-9	1-12	1-12	1-12	1-12
WAYNE			1-18	1-12			1-18	1-12
WEBER	1-20	1-20	1-20	1-20	1-20	1-20	1-20	1-20

TABLE 9
 PERCENT OF INCREASE FROM BACHELOR'S MINIMUM TO MASTER'S MAXIMUM
 2007-2008

DISTRICT	BACHELOR'S MINIMUM	MASTER'S MAXIMUM	INCREASE	
			DOLLAR AMOUNT	INDEX PERCENT
ALPINE				
BEAVER	\$30,610	\$50,693	\$20,083	1.66
BOX ELDER				
CACHE				
CARBON				
DAGGETT	\$30,491	\$50,784	\$20,293	1.67
DAVIS	\$31,092	\$55,474	\$24,382	1.78
DUCHESNE				
EMERY	\$30,720	\$52,340	\$21,620	1.70
GARFIELD	\$30,471	\$54,476	\$24,005	1.79
GRAND	\$28,859	\$49,813	\$20,954	1.73
GRANITE	\$31,604	\$56,283	\$24,679	1.78
IRON				
JORDAN	\$31,672	\$58,099	\$26,427	1.83
JUAB	\$29,090	\$51,814	\$22,724	1.78
KANE				
LOGAN	\$31,252	\$55,900	\$24,648	1.79
MILLARD				
MORGAN				
MURRAY	\$33,492	\$58,711	\$25,219	1.75
NEBO	\$28,923	\$53,319	\$24,396	1.84
N. SANPETE	\$29,798	\$49,640	\$19,842	1.67
N. SUMMIT	\$31,095	\$51,260	\$20,165	1.65
OGDEN	\$32,123	\$56,149	\$24,026	1.75
PARK CITY	\$34,423	\$63,570	\$29,147	1.85
PIUTE				
PROVO	\$29,329	\$52,776	\$23,447	1.80
RICH	\$30,360	\$52,847	\$22,487	1.74
SLC	\$34,968	\$58,573	\$23,605	1.68
SAN JUAN				
SEVIER	\$29,335	\$50,568	\$21,233	1.72
S. SANPETE	\$31,259	\$51,592	\$20,333	1.65
S. SUMMIT	\$34,105	\$53,513	\$19,408	1.57
TINTIC				
TOOELE	\$31,244	\$54,291	\$23,047	1.74
UINTAH				
USDB				
WASATCH	\$30,989	\$52,834	\$21,845	1.70
WASHINGTON	\$30,496	\$51,181	\$20,685	1.68
WAYNE				
WEBER	\$31,949	\$55,863	\$23,914	1.75
AVERAGE	\$31,144	\$53,937	\$22,793	1.73%

GRAPHIC COMPARISON OF SALARY SCHEDULE MINIMUM AND MAXIMUM
2003-04 TO 2007-08
BACHELOR'S DEGREE

Figure 1 (A)



GRAPHIC COMPARISON OF SALARY SCHEDULE MINIMUM AND MAXIMUM
2003-04 TO 2007-08
MASTER'S DEGREE

Figure 1 (B)

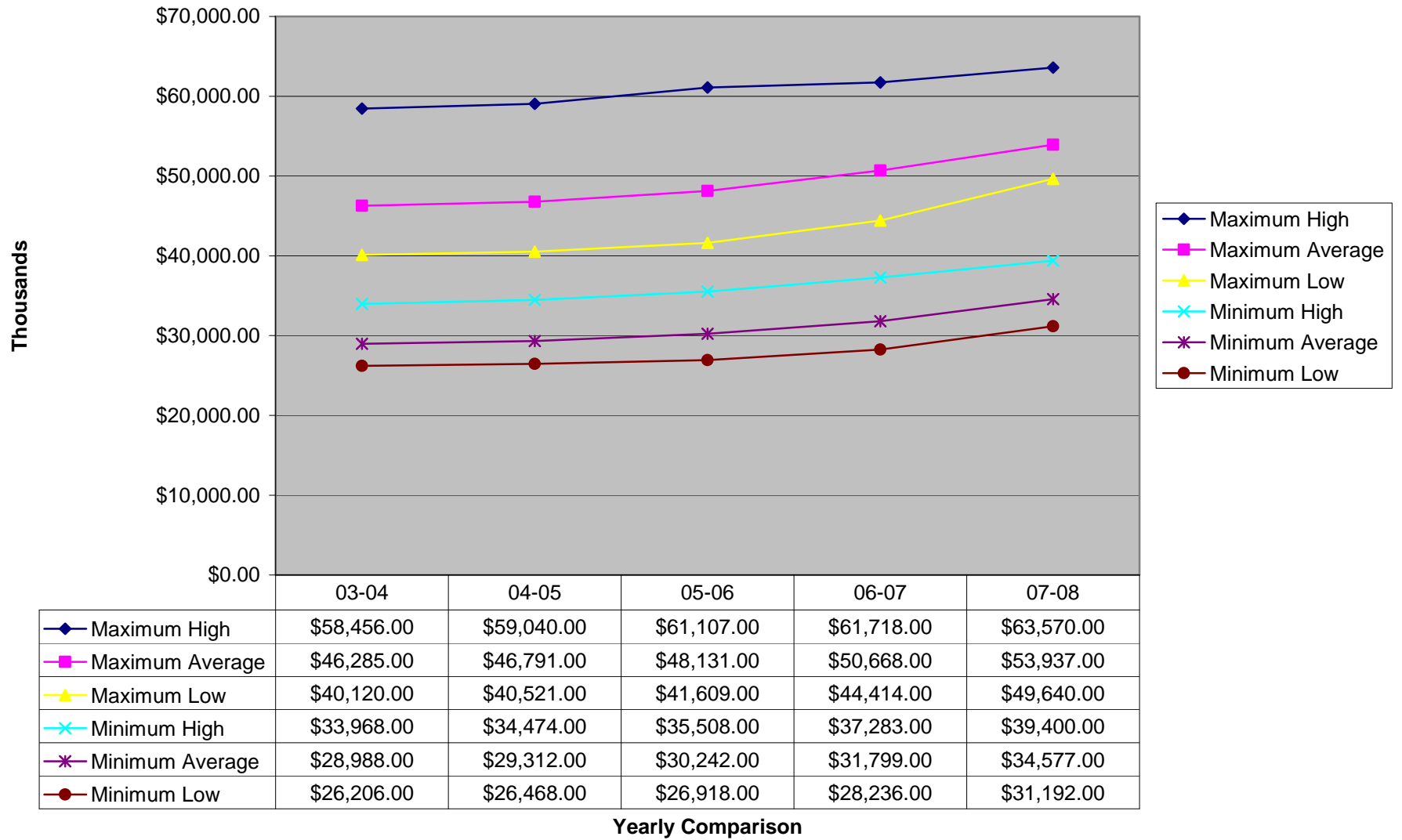


FIGURE 2
 BEGINNING MONTHLY SALARIES SCHEDULED IN UTAH SCHOOL DISTRICTS
 (Certificated Teacher with Bachelor's Degree)

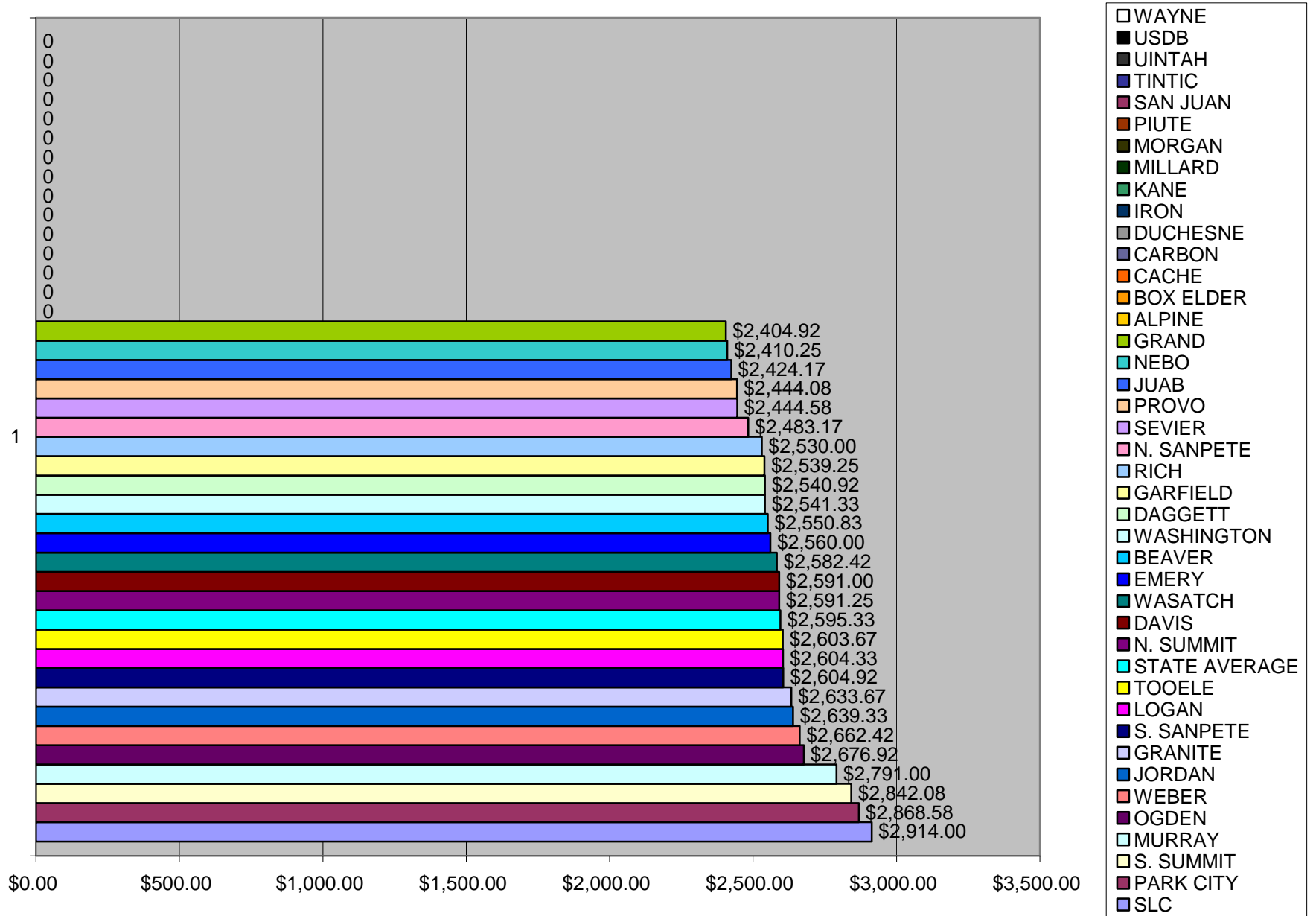
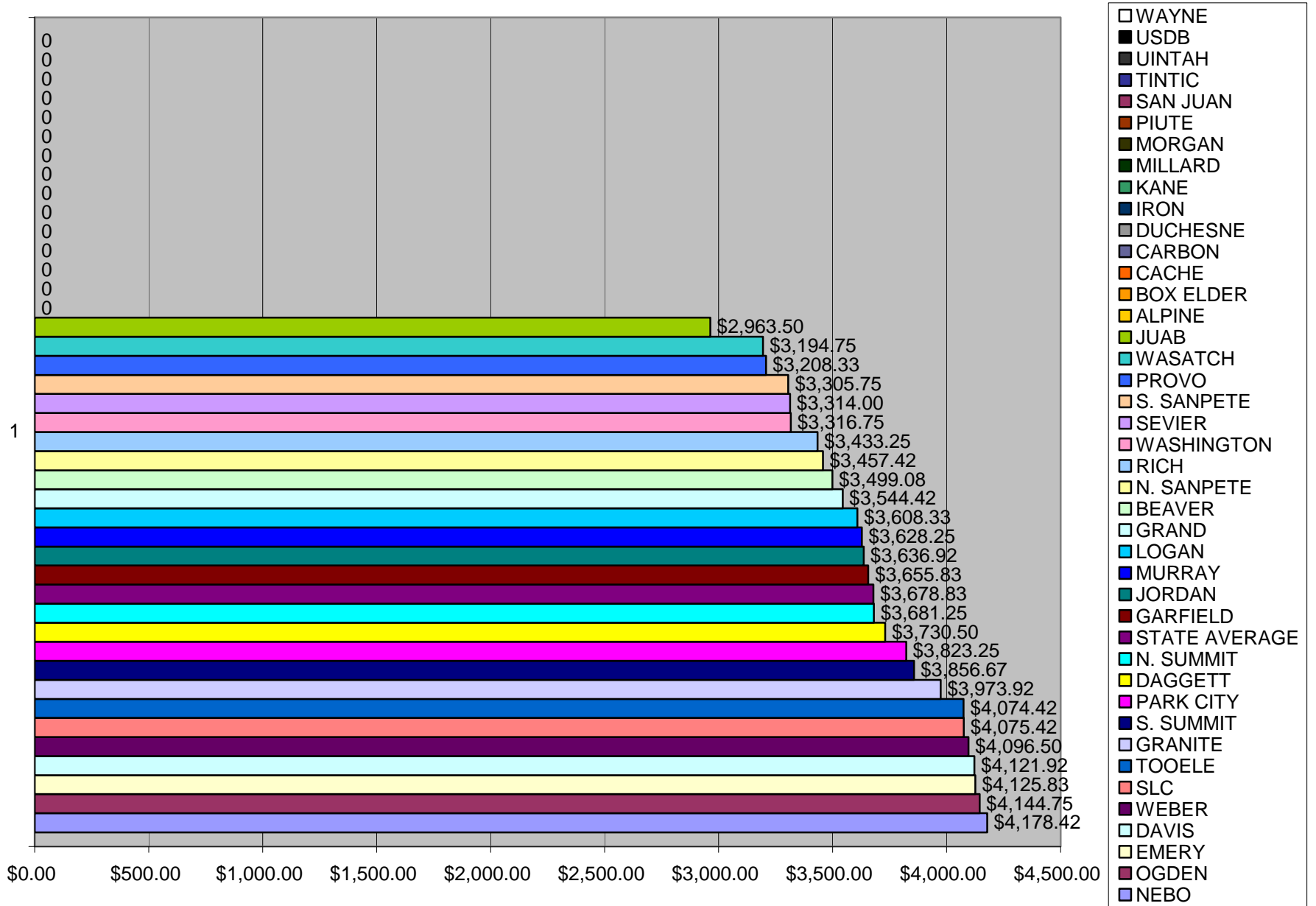


FIGURE 3
 MAXIMUM MONTHLY SALARIES SCHEDULED IN UTAH SCHOOL DISTRICTS
 (Certificated Teacher with Bachelor's Degree)



SECTION C

LIFETIME EARNINGS

Salary schedules cannot be properly evaluated in terms of any single feature of the schedule such as the beginning salary or the maximum salary. The alert educator will decide where to teach after carefully studying all factors of a salary schedule and related benefits. **Potential lifetime earnings will probably be the most important single item in this decision.** The measure includes, in proper perspective, all factors in the salary schedule – beginning salary, maximum salary, number of years required to reach maximum salary, increment patterns, etc.

The data presented in Table 10 and Table 11 is a comparison of school districts based on the salaries scheduled for a certificated classroom teacher with a bachelor's degree and those with a master's degree, in respect to twenty-year earnings.

Table 12 presents twenty-year lifetime earnings available with additional levels of training which are given recognition in the salary schedules.

Tables 13 and 14 give the historical rank of each Utah school district determined by the potential earnings of a bachelor and master degree teacher serving twenty years within the framework of each district's salary schedule.

TABLE 10
 TWENTY YEAR EARNINGS
 CERTIFICATED TEACHER WITH BACHELOR'S DEGREE
 2007-2008

RANK	DISTRICT	20-YEAR EARNINGS
1	SLC	\$910,470
2	TOOELE	\$832,175
3	OGDEN	\$831,721
4	PARK CITY	\$831,637
5	EMERY	\$829,840
6	NEBO	\$822,953
7	DAVIS	\$814,292
8	N. SUMMIT	\$796,439
9	GRAND	\$753,238
10	PROVO	\$727,450
11	S. SUMMIT	\$635,011
12	WEBER	\$589,775
13	DAGGETT	\$561,491
14	MURRAY	\$505,450
15	GRANITE	\$496,812
16	GARFIELD	\$473,725
17	JORDAN	\$471,322
18	BEAVER	\$396,167
19	RICH	\$385,125
20	LOGAN	\$370,300
21	SEVIER	\$369,467
22	WASHINGTON	\$309,512
23	S. SANPETE	\$307,918
24	N. SANPETE	\$292,105
25	WASATCH	\$276,360
26	JUAB	\$251,615
27	ALPINE	
28	BOX ELDER	
29	CACHE	
30	CARBON	
31	DUCHESNE	
32	IRON	
33	KANE	
34	MILLARD	
35	MORGAN	
36	PIUTE	
37	SAN JUAN	
38	TINTIC	
39	UINTAH	
40	USDB	
41	WAYNE	

TABLE 11
 TWENTY YEAR EARNINGS
 CERTIFICATED TEACHER WITH MASTER'S DEGREE
 2007-2008

RANK	DISTRICT	20-YEAR EARNINGS
1	SLC	\$1,045,934
2	PARK CITY	\$1,014,649
3	JORDAN	\$989,942
4	OGDEN	\$926,205
5	TOOELE	\$913,542
6	DAVIS	\$911,824
7	EMERY	\$905,880
8	S. SUMMIT	\$905,112
9	NEBO	\$886,779
10	PROVO	\$883,033
11	MURRAY	\$881,718
12	DAGGETT	\$864,138
13	GRAND	\$856,695
14	N. SUMMIT	\$856,386
15	SEVIER	\$854,435
16	GARFIELD	\$749,689
17	JUAB	\$712,503
18	LOGAN	\$708,028
19	GRANITE	\$707,532
20	WEBER	\$670,425
21	RICH	\$628,334
22	N. SANPETE	\$598,042
23	BEAVER	\$583,384
24	S. SANPETE	\$577,206
25	WASATCH	\$563,903
26	WASHINGTON	\$489,581
27	ALPINE	
28	BOX ELDER	
29	CACHE	
30	CARBON	
31	DUCHESNE	
32	IRON	
33	KANE	
34	MILLARD	
35	MORGAN	
36	PIUTE	
37	SAN JUAN	
38	TINTIC	
39	UINTAH	
40	USDB	
41	WAYNE	

TABLE 12
 TWENTY YEAR LIFETIME EARNINGS ON VARIOUS SALARY LANES
 2007-2008

DISTRICT	20-YEAR BACHELOR'S DEGREE	20-YEAR BACHELOR'S PLUS 15-29	20-YEAR BACHELOR'S PLUS 30-44	20-YEAR BACHELOR'S PLUS 45-75	20-YEAR MASTER'S DEGREE
ALPINE					
BEAVER	396,167	408,811		515,673	583,384
BOX ELDER					
CACHE					
CARBON					
DAGGETT	561,491	809,676	834,868		864,138
DAVIS	814,292	841,146	878,929	911,824	911,824
DUCHESNE					
EMERY	829,840		845,290	868,140	905,880
GARFIELD	473,725	590,493	650,273	733,500	749,689
GRAND	753,238		794,668	824,405	856,695
GRANITE	496,812	561,691	642,930		707,532
IRON					
JORDAN	471,322	486,846	498,746	934,008	989,942
JUAB	251,615	374,597	473,072	680,007	712,503
KANE					
LOGAN	370,300	576,440			708,028
MILLARD					
MORGAN					
MURRAY	505,450		625,650	765,638	881,718
N. SANPETE	292,105		337,895	388,419	598,042
N. SUMMIT	796,439		833,224		856,386
NEBO	822,953	828,301	861,093		916,970
OGDEN	831,721	881,537			926,205
PARK CITY	831,637		924,403	958,997	1,014,649
PIUTE					
PROVO	727,450	763,577	826,040	855,437	883,033
RICH	385,125	443,067	555,551		628,334
S. SANPETE	307,918		358,711	514,712	577,206
S. SUMMIT	635,011	694,567	756,802	821,715	905,112
SAN JUAN					
SEVIER	369,467	431,099			854,435
SLC	910,470	956,104	1,013,421		1,045,934
TINTIC					
TOOELE	832,175		855,136	888,487	913,542
UINTAH					
USDB					
WASATCH	276,360	463,752	536,812		563,903
WASHINGTON	309,512	365,198	425,219		489,581
WAYNE					
WEBER	589,775			607,102	670,425

TABLE 12 (CONTINUED)
 TWENTY YEAR LIFETIME EARNINGS ON VARIOUS SALARY LANES
 2007-2008

20-YEAR MASTER'S PLUS 15-29	20-YEAR MASTER'S PLUS 30-44	20-YEAR MASTER'S PLUS 45-75	20-YEAR DOCTORATE	DISTRICT
		602,291	621,842	ALPINE BEAVER BOX ELDER CACHE CARBON
888,330	913,512		938,715	DAGGETT
934,478	957,125		979,780	DAVIS DUCHESNE
	924,720		943,480	EMERY
778,718	826,171			GARFIELD
			878,244	GRAND
789,047	875,002		899,956	GRANITE IRON
	1,032,593			JORDAN
896,463				JUAB KANE
	726,904		744,172	LOGAN MILLARD MORGAN MURRAY
	915,423			N. SANPETE
878,185	609,415	620,785	643,588	N. SUMMIT
	916,970	920,423		NEBO
	973,187		966,770	OGDEN
		1,072,395		PARK CITY PIUTE
	889,119	918,185	946,600	PROVO RICH
		599,215	669,851	S. SANPETE
			958,700	S. SUMMIT
	891,791		922,453	SAN JUAN
1,097,563	1,138,266		1,328,620	SEVIER SLC TINTIC
		939,822		TOOELE UINTAH USDB
	584,695			WASATCH
558,287	631,339		651,556	WASHINGTON WAYNE
		679,025	692,028	WEBER

TABLE 13
HISTORICAL RANK
BACHELOR'S DEGREE 20-YEAR LIFETIME EARNINGS BY SCHOOL DISTRICT
2001-02 TO 2007-08

DISTRICT	2007-08	2006-07	2005-06	2004-05	2003-04	2002-03	2001-02
ALPINE		16	12	11	11	10	9
BEAVER	18	35	30	24	19	18	19
BOX ELDER		24	27	25	20	17	16
CACHE		14	18	15	14	14	14
CARBON		17	15	18	15	27	26
DAGGETT	13	36	21	22	37	37	35
DAVIS	7	8	8	7	7	7	13
DUCHESNE		31	40	40	41	41	41
EMERY	5	6	9	8	8	6	5
GARFIELD	16	34	23	28	28	25	22
GRAND	9	28	26	27	29	29	28
GRANITE	15	12	13	13	12	11	10
IRON		25	32	32	33	34	34
JORDAN	17	23	33	36	30	30	29
JUAB	26	33	41	41	40	33	33
KANE		15	19	20	21	19	21
LOGAN	20	3	25	26	26	23	20
MILLARD		22	4	3	3	3	3
MORGAN		26	36	37	35	36	37
MURRAY	14	27	14	12	17	16	25
N. SANPETE	24	32	39	39	39	40	40
N. SUMMIT	8	19	22	23	22	20	23
NEBO	6	9	7	4	5	5	4
OGDEN	3	5	5	9	9	9	6
PARK CITY	4	4	2	2	2	2	2
PIUTE			17	16	16	15	15
PROVO	10		38	33	31	31	31
RICH	19	29	34	34	34	35	36
S. SANPETE	23	30	37	38	38	39	39
S. SUMMIT	11	7	6	6	6	13	12
SAN JUAN		2	3	10	10	8	8
SEVIER	21	20	29	31	36	38	38
SLC	1	1	1	1	1	1	1
TINTIC			24	19	24	21	17
TOOELE	2	10	16	29	27	28	27
UINTAH		18	20	17	18	24	30
USDB		13	10	5	4	4	7
WASATCH	25	36	31	21	23	26	24
WASHINGTON	22	21	28	30	25	22	18
WAYNE			35	35	32	32	32
WEBER	12	11	11	14	13	12	11

TABLE 14
HISTORICAL RANK
MASTER'S DEGREE 20-YEAR LIFETIME EARNINGS BY SCHOOL DISTRICT
2001-02 TO 2007-08

DISTRICT	2007-08	2006-07	2005-06	2004-05	2003-04	2002-03	2001-02
ALPINE		34	12	11	10	7	6
BEAVER	23	18	41	31	25	26	27
BOX ELDER		35	32	33	30	27	25
CACHE		33	28	29	26	24	24
CARBON		32	35	37	37	41	41
DAGGETT	12		33	35	36	36	35
DAVIS	6	10	39	5	6	5	16
DUCHESNE		26	37	39	39	40	40
EMERY	7	19	14	16	15	14	12
GARFIELD	16		13	18	19	18	17
GRAND	13	27	29	30	32	31	9
GRANITE	19	13	11	12	12	9	8
IRON		17	25	27	28	28	26
JORDAN	3	24	24	26	21	19	19
JUAB	17	15	17	23	22	21	21
KANE		6	16	28	29	25	28
LOGAN	18	30	20	20	20	20	20
MILLARD		23	6	9	8	10	9
MORGAN		21	36	36	35	35	36
MURRAY	11	5	3	3	3	3	3
N. SANPETE	22	31	34	34	33	33	32
N. SUMMIT	14	22	38	38	40	37	39
NEBO	9	29	21	17	16	16	13
OGDEN	4	9	5	8	9	6	5
PARK CITY	2	4	1	1	1	2	2
PIUTE			22	22	23	23	23
PROVO	10		23	14	5	11	10
RICH	21	25	27	25	27	29	31
S. SANPETE	24	16	30	32	33	32	30
S. SUMMIT	8	3	9	7	7	17	15
SAN JUAN		2	4	15	14	13	18
SEVIER	15	11	18	24	31	34	33
SLC	1	1	2	2	2	1	1
TINTIC			10	6	13	12	11
TOOELE	5	28	31	40	38	38	37
UINTAH		12	19	19	24	30	34
USDB		20	8	4	4	4	4
WASATCH	25	14	26	13	18	22	22
WASHINGTON	26	7	15	21	17	15	14
WAYNE			40	41	41	39	38
WEBER	20	8	7	10	11	8	7

SECTION D

AVERAGE SALARY ANALYSIS AND SCHOOL DISTRICT BREAKDOWN

In Tables 15 and 16 a historical picture of the average teacher's salary is illustrated. Utah's averages of both the bachelor's and master's salary lanes' minimums and maximums are stated and compared.

An analysis of the average teacher's salary as compared to constant dollars is also reviewed.

TABLE 15
 AVERAGE MINIMUM AND MAXIMUM SCHEDULED SALARIES FOR
 CLASSROOM TEACHERS WITH A BACHELOR'S DEGREE & MASTER'S DEGREE

YEAR	BA MINIMUM	BA MAXIMUM	MA MINIMUM	MA MAXIMUM	AVERAGE SALARY
2007-08	\$31,144	\$44,146	\$34,577	\$53,937	\$44,257
2006-07	\$28,653	\$41,826	\$31,799	\$50,668	\$41,242
2005-06	\$27,258	\$39,733	\$30,242	\$48,131	\$39,396
2004-05	26,399	38,848	29,312	46,792	39,965
2003-04	26,084	38,341	28,988	46,285	38,789
2002-03	25,867	38,090	28,741	45,678	38,425
2001-02	25,712	37,913	28,557	45,463	38,139
2000-01	24,506	36,400	27,214	43,319	36,441
1999-00	23,253	34,844	25,822	41,287	34,946
1998-99	22,892	34,313	25,422	40,630	34,070
1997-98	22,177	33,177	24,522	39,158	32,394
1996-97	21,434	32,110	23,749	37,836	31,867
1995-96	20,492	30,850	22,729	36,203	30,588
1994-95	19,542	29,481	21,695	34,541	29,082
1993-94	18,747	28,227	20,816	33,171	27,706
1992-93	18,190	27,431	20,140	31,957	27,239
1991-92	17,764	26,709	19,668	31,082	26,339
1990-91	17,185	25,829	19,001	30,011	25,578
1989-90	15,983	24,189	17,670	28,095	23,686
1988-89	15,396	23,398	17,105	27,058	22,852
1987-88	15,266	23,171	16,966	26,793	22,555
1986-87	15,252	22,997	17,020	26,804	22,956
1985-86	15,060	22,707	16,805	26,412	22,553
1984-85	14,369	21,861	15,931	25,079	21,170
1983-84	13,746	20,829	15,218	23,917	20,007
1982-83	13,633	20,682			
1981-82	12,603	19,205			
1980-81	11,736	17,931			
1979-80	10,452	15,971			
1978-79	9,700	14,913			
1977-78	9,119	13,828			
1976-77	8,515	13,052			
1975-76	7,897	12,025			
1974-75	7,257	10,895			
1973-74	6,652	9,973			
1972-73	6,228	9,288			

TABLE 16
TEN YEAR TEACHER'S SALARY ANALYSIS
2007-2008

SCHOOL YEAR	CONSUMER PRICE INDEX (1982-84=100)	PURCHASING POWER OF \$1.00	AVERAGE TEACHER SALARY	PERCENT SALARY INCREASE	CONSTANT DOLLARS	DOLLARS LOST TO INFLATION	CONSTANT DOLLAR CHANGE
1997-98	162.2	0.932	\$32,394	1.65%	\$30,177	\$2,217	-0.04%
1998-99	165.1	0.915	\$34,070	5.17%	\$31,181	\$2,889	3.33%
1999-00	170.3	0.887	\$34,946	2.57%	\$31,006	\$3,940	-0.56%
2000-01	175.9	0.859	\$36,441	4.28%	\$31,303	\$5,138	0.96%
2001-02	178.7	0.846	\$38,139	4.66%	\$32,248	\$5,891	3.02%
2002-03	182.8	0.827	\$38,425	0.75%	\$31,762	\$6,663	-1.51%
2003-04	187.1	0.808	\$38,789	0.95%	\$31,326	\$7,463	-1.37%
2004-05	192.7	0.784	\$39,965	3.03%	\$31,337	\$8,628	0.04%
2005-06	201.6	0.791	\$39,396	-1.42%	\$31,169	\$8,227	-0.54%
2006-07	207.9	0.767	\$41,242	4.69%	\$31,641	\$9,601	1.51%
2007-08	213.5	0.759	\$44,257	7.31%	\$33,591	\$10,666	6.16%
CHANGE 1997-98 TO 2007-08			\$11,863	36.62%	\$3,414	\$71,323	11.31%
AVERAGE ANNUAL CHANGE			\$1,186	3.66%	\$341	\$7,132	1.13%

This table shows that over the last ten years the average teacher's salary rose \$11,863, a 36.62% gain. This was an average of \$1,186 per year.

However, when one uses the consumer price index to compute constant dollars, accounting for inflation, the table illustrates that the teacher's average salary increased by \$3,414 or 11.31% in constant dollars over the last ten years.

*Estimated salary data and cpi-u
NA: Not Applicable

SECTION E

**DISTRICT SALARY SCHEDULES
2007 – 2008**

**INDEX TO
SCHOOL DISTRICT SALARY SCHEDULES**

Pages 36 thru 76 contain the separate salary schedules for each district in Utah.
The schedules are arranged in order by district code.

<u>Code</u>	<u>Utah School Districts</u>	<u>Page</u>
01	ALPINE	32
02	BEAVER	33
03	BOX ELDER	34
04	CACHE	35
05	CARBON	36
06	DAGGETT	37
07	DAVIS	38
08	DUCHESNE	39
09	EMERY	40
10	GARFIELD	41
11	GRAND	42
12	GRANITE	43
13	IRON	44
14	JORDAN	45
15	JUAB	46
16	KANE	47
17	MILLARD	48
18	MORGAN	49
19	NEBO	50
20	NORTH SANPETE	51
21	NORTH SUMMIT	52
22	PARK CITY	53
23	PIUTE	54
24	RICH	55
25	SAN JUAN	56
26	SEVIER	57
27	SOUTH SANPETE	58
28	SOUTH SUMMIT	59
29	TINTIC	60
30	TOOELE	61
31	UINTAH	62
32	WASATCH	63
33	WASHINGTON	64
34	WAYNE	65
35	WEBER	66
36	SALT LAKE CITY	67
37	OGDEN	68
38	PROVO	69
39	LOGAN	70
40	MURRAY	71
41	UTAH SCHOOLS FOR THE DEAF AND BLIND	72

ALPINE SCHOOL DISTRICT
TEACHER SALARY SCHEDULE
2007-2008

BEAVER SCHOOL DISTRICT
TEACHER SALARY SCHEDULE
2007-2008

Step	BA	BA + 25	BA + 50	MA	MA + 45	PhD
1						
2						
3	30,610	31,585	32,595	33,634	34,712	35,825
4	31,585	32,595	33,634	34,712	35,825	36,977
5	32,595	33,634	34,712	35,825	36,977	38,168
6	33,634	34,712	35,825	36,977	38,168	39,399
7	34,712	35,825	36,977	38,168	39,399	40,673
8	35,825	36,977	38,168	39,399	40,673	41,989
9	36,977	38,168	39,399	40,673	41,989	43,350
10	38,168	39,399	40,673	41,989	43,350	44,758
11	39,399	40,673	41,989	43,350	44,758	46,214
12	40,673	41,989	43,350	44,758	46,214	47,718
13	41,989	43,254	44,758	46,214	47,718	49,274
14			46,103	47,718	49,274	50,883
15			47,490	49,274	50,883	52,548
20				50,693	52,351	54,066
25				52,156	53,863	55,629
28				53,662	55,420	57,240
29				55,213	57,024	58,898
30				56,811	58,676	60,607

TWENTY YEAR EARNING TOTALS

	\$396,167	\$408,811	\$515,673	\$583,384	\$602,291	\$621,842
--	-----------	-----------	-----------	-----------	-----------	-----------

BOX ELDER SCHOOL DISTRICT
TEACHER SALARY SCHEDULE
2007-2008

CACHE SCHOOL DISTRICT
TEACHER SALARY SCHEDULE
2007-2008

CARBON SCHOOL DISTRICT
TEACHER SALARY SCHEDULE
2007-2008

DAGGETT SCHOOL DISTRICT
TEACHER SALARY SCHEDULE
2007-2008

Step	BA	BA+20	BA+36	MA	MA+20	MA+37	PhD
1	30,491	31,751	33,010	34,270	35,529	36,789	38,049
2	31,331	32,590	33,850	35,110	36,369	37,629	38,888
3	32,170	33,430	34,690	36,949	37,209	38,468	39,728
4	33,010	34,270	35,529	36,789	38,049	39,308	40,568
5	33,850	35,110	36,369	37,629	38,888	40,148	41,407
6	34,970	36,229	37,489	38,748	40,008	41,268	42,527
7	36,089	37,349	38,608	39,868	41,128	42,387	43,647
8	37,209	38,468	39,728	40,988	42,247	43,507	44,766
9	38,328	39,588	40,848	42,107	43,367	44,626	45,886
10	39,728	40,708	41,967	43,507	44,766	46,026	47,286
11	41,128	42,107	43,367	44,906	46,166	47,426	48,685
12	42,807	43,787	45,046	46,586	47,845	49,105	50,365
15	44,766	45,746	47,006	48,545	49,805	51,064	52,324
20		47,985	49,245	50,784	52,044	53,304	54,563
25			51,764	53,304	54,563	55,823	57,082

TWENTY YEAR EARNING TOTALS

\$561,491	\$809,676	\$834,868	\$864,138	\$888,330	\$913,521	\$938,715
-----------	-----------	-----------	-----------	-----------	-----------	-----------

DAVIS SCHOOL DISTRICT
TEACHER SALARY SCHEDULE
2007-2008

Step	BA	BA+20	BA+40	BA+50/MA	MA+20	MA+40	PhD
1	31,092	32,438	33,772	34,889	36,004	37,121	38,235
2	31,212	32,553	33,890	35,007	36,121	37,238	38,352
3	32,115	33,459	34,793	35,910	37,025	38,143	39,257
4	33,293	34,630	35,958	37,084	38,200	39,309	40,423
5	34,514	35,852	37,191	38,299	39,412	40,528	41,641
6	35,755	37,089	38,423	39,536	40,647	41,757	42,873
7	37,066	38,408	39,740	40,854	41,967	43,082	44,188
8	38,438	39,777	41,108	42,224	43,333	44,447	45,562
9	39,858	41,203	42,530	43,645	44,759	45,870	46,977
10	41,304	42,638	43,974	45,087	46,200	47,309	48,421
11	42,802	44,132	45,468	46,582	47,696	48,807	49,918
12	44,352	45,691	47,022	48,136	49,250	50,360	51,478
13	45,965	47,302	48,631	49,749	50,856	51,997	53,156
14	46,445	47,796	50,262	51,377	52,531	53,689	54,849
15	46,445	47,796	50,789	53,131	54,293	55,448	56,605
16	46,445	47,796	50,789	53,710	54,883	56,052	57,220
17	46,445	47,796	50,789	53,710	54,883	56,052	57,220
18	46,445	47,796	50,789	53,710	54,883	56,052	57,220
19	46,445	47,796	50,789	53,710	54,883	56,052	57,220
20	47,856	49,198	52,222	55,474	56,652	57,812	58,965
21	48,357	49,712	52,791	56,078	57,269	58,441	59,609
22	48,357	49,712	52,791	56,078	57,269	58,441	59,609
23	48,357	49,712	52,791	56,078	57,269	58,441	59,609
24	48,357	49,712	52,791	56,078	57,269	58,441	59,609
25	49,463	50,852	54,050	57,416	58,635	59,835	61,029

TWENTY YEAR EARNING TOTALS

\$814,292	\$841,146	\$878,929	\$911,824	\$934,478	\$957,125	\$979,780
-----------	-----------	-----------	-----------	-----------	-----------	-----------

DUCHESNE SCHOOL DISTRICT
TEACHER SALARY SCHEDULE
2007-2008

EMERY SCHOOL DISTRICT
TEACHER SALARY SCHEDULE
2007-2008

Step	BA	BA+30	BA+55	MA	MA+30	PhD
1	30,720	31,280	32,100	33,460	34,140	34,820
2	31,850	32,430	33,280	34,700	35,410	36,110
3	32,710	33,310	34,190	35,640	36,370	37,100
4	33,840	34,470	35,370	36,880	37,630	38,290
5	35,230	35,890	36,840	38,410	39,200	39,990
6	36,650	37,330	38,330	39,970	40,790	41,610
7	37,990	38,690	39,730	41,440	42,290	43,150
8	39,330	40,060	41,140	42,910	43,800	44,690
9	40,670	41,430	42,540	44,390	45,310	46,230
10	42,280	43,060	44,230	46,150	47,110	48,080
11	43,880	44,700	45,920	47,920	48,920	49,920
12	45,490	46,340	47,600	49,690	50,730	51,770
13	47,100	47,980	49,290	51,460	52,540	53,620
18	47,900	48,800	50,140	52,340	53,440	54,540
23	48,700	49,620	50,980	53,220	54,350	55,470
28	49,510	50,440	51,820	54,110	55,250	56,390

TWENTY YEAR EARNING TOTALS

\$829,840	\$845,290	\$868,140	\$905,880	\$924,720	\$943,480
-----------	-----------	-----------	-----------	-----------	-----------

GARFIELD SCHOOL DISTRICT
TEACHER SALARY SCHEDULE
2007-2008

Step	BA	BA + 20	BA + 30	BA + 40	MA	MA + 20	MA + 40
1	30,471	32,146	32,983	34,100	34,937	36891	39,683
2	31,309	32,983	33,821	34,937	35,775	37729	40,520
3	32,146	33,821	34,658	35,775	36,891	38,566	41,357
4	32,983	34,658	35,496	36,612	37,729	39,403	42,195
5	34,100	35,775	36,333	37,729	38,845	40,520	43,311
6	34,658	36,333	36,891	38,845	39,962	41,636	44,428
7	35,775	37,450	38,008	39,962	41,078	42,753	45,544
8	36,891	38,566	39,124	41,357	42,195	43,870	46,661
9	38,287	39,962	40,520	42,753	43,590	45,265	48,056
10	39,683	41,357	41,916	44,149	44,986	46,661	49,452
11	41,078	42,753	43,311	45,544	46,382	48,056	50,848
12	42,474	44,149	44,707	46,940	47,777	49,452	52,243
13	43,870	45,544	46,103	48,336	49,173	50,848	53,639
14		46,940	47,498	49,731	50,569	52,243	55,035
15			48,894	51,127	51,964	53,639	56,430
16				52,243	53,360	55,035	57,826
20		48,056	50,010	53,360	54,476	56,151	58,943
24			51,127	54,476	55,593	57,268	60,059
28				55,593	56,709	58,384	61,176

TWENTY YEAR EARNING TOTALS

\$473,725 \$590,493 \$650,273 \$733,500 \$749,689 \$778,718 \$826,171

GRAND SCHOOL DISTRICT
TEACHER SALARY SCHEDULE
2007-2008

Step	BA	BA+30	BA+60	MA	PhD
1	28,859	29,933	31,010	32,626	33,704
2	29,935	31,010	32,087	33,704	34,780
3	31,012	32,087	33,164	34,780	35,857
4	32,089	33,164	34,242	35,857	36,932
5	33,165	34,242	35,318	36,932	38,010
6	34,335	35,412	36,488	38,103	39,181
7	35,506	36,583	37,660	39,274	40,352
8	36,679	37,756	38,830	40,446	41,522
9	37,849	38,926	40,003	41,616	42,694
10	39,020	40,096	41,173	42,788	43,866
11	40,191	41,268	42,344	43,959	45,036
12	40,191	42,438	43,515	45,128	46,206
13	40,191	43,610	44,686	46,301	47,378
14	40,191	43,610	45,856	47,473	48,550
15	41,360	44,778	47,029	48,643	49,721
16	42,533	45,951	48,200	49,813	50,891
TWENTY YEAR EARNING TOTALS					
	\$753,238	\$794,668	\$824,405	\$856,695	\$878,244

GRANITE SCHOOL DISTRICT
TEACHER SALARY SCHEDULE
2007-2008

Step	BA	BA+20	BA+40	MA	MA+20	MA+40	PhD
1	31,604	32,713	34,654	35,209	36,595	37,982	39,368
2	31,604	32,713	34,654	35,209	36,595	37,982	39,368
3	31,604	32,713	34,654	35,209	36,595	37,982	39,368
4	32,713	33,822	35,763	36,318	37,704	39,091	40,477
5	34,377	35,486	37,427	37,982	39,368	40,755	42,141
6	36,041	37,150	39,091	39,645	41,032	42,418	43,805
7	37,704	38,814	40,755	41,309	42,696	44,082	45,469
8	39,368	40,477	42,418	42,973	44,359	45,746	47,132
9	41,032	42,141	44,082	44,637	46,023	47,410	48,796
10	42,696	43,805	45,746	46,300	47,687	49,073	50,460
11	44,359	45,469	47,410	47,964	49,351	50,737	52,123
12	46,023	47,132	49,073	49,628	51,014	52,401	53,787
13		48,796	50,737	51,292	52,678	54,065	55,451
14			52,401	52,955	54,342	55,728	57,115
15				54,619	56,006	57,392	58,778
16					57,669	59,056	60,442
17						60,719	62,106
18							
19							
20	47,687	50,460	54,065	56,283	59,333	62,383	63,770

TWENTY YEAR EARNING TOTALS

\$496,812 \$561,691 \$642,930 \$707,532 \$789,047 \$875,002 \$899,956

IRON SCHOOL DISTRICT
TEACHER SALARY SCHEDULE
2007-2008

JORDAN SCHOOL DISTRICT
TEACHER SALARY SCHEDULE
2007-2008

Step	BA	BA + 20	BA + 30	BA + 40	MA	MA + 30
1	31,672	32,333	32,719	33,247	34,834	36,316
2	33,061	33,735	34,144	34,659	36,279	37,833
3	34,519	35,201	35,627	36,139	37,789	39,411
4	36,042	36,737	37,183	37,686	39,369	41,060
5	37,641	38,344	38,804	39,303	41,017	42,779
6	39,315	40,018	40,506	40,992	42,738	44,575
7	41,065	41,773	42,287	42,752	44,528	46,454
8	43,435	43,614	44,145	44,600	46,407	48,413
9	43,643	46,107	46,673	47,101	48,542	50,459
10	43,643	46,328	48,730	49,179	50,404	52,589
11	43,643	46,328	48,964	51,290	52,533	54,818
12	43,643	46,328	48,964	51,538	55,458	57,870
13				51,538	55,725	58,151
14				51,538	55,725	58,151
15				53,741	58,099	60,619

**TWENTY YEAR EARNING
TOTALS**

\$471,322	\$486,846	\$498,746	\$934,008	\$989,942	\$1,032,593
-----------	-----------	-----------	-----------	-----------	-------------

JUAB SCHOOL DISTRICT
TEACHER SALARY SCHEDULE
2007-2008

Step	BA	BA+20	BA+35	BA+50	MA	MA+15
1	29,090	29,875	30,780	31,677	33,325	34,358
2	29,090	29,875	30,780	31,677	33,325	34,358
3	29,090	29,875	30,780	31,677	33,325	34,358
4	30,282	31,037	31,974	32,837	34,581	35,652
5	31,524	32,250	33,209	34,105	35,885	36,997
6	32,816	33,506	34,493	35,424	37,238	38,392
7	34,161	34,813	35,830	36,797	38,643	39,840
8	35,562	36,171	37,216	38,221	40,100	41,343
9		37,579	38,655	39,699	41,609	42,899
10		39,047	40,151	41,235	43,179	44,517
11		40,569	41,705	42,832	44,808	46,197
12			43,317	44,486	46,495	47,936
13			44,182	46,177	48,182	49,742
14				47,868	49,998	51,549
17				49,559	51,814	53,355
20						55,162

TWENTY YEAR EARNING TOTALS

\$251,615	\$374,597	\$473,072	\$680,007	\$712,503	\$896,463
-----------	-----------	-----------	-----------	-----------	-----------

KANE SCHOOL DISTRICT
TEACHER SALARY SCHEDULE
2007-2008

MILLARD SCHOOL DISTRICT
TEACHER SALARY SCHEDULE
2007-2008

MORGAN SCHOOL DISTRICT
TEACHER SALARY SCHEDULE
2007-2008

NEBO SCHOOL DISTRICT
TEACHER SALARY SCHEDULE
2007-2008

Step	BA	BA+20	BA+36	MA	MA+30	PhD
1	28,923	29,178	30,512	31,572	32,631	34,220
2	29,482	30,277	31,072	32,131	33,190	34,779
3	30,542	31,336	32,131	33,190	34,250	35,839
4	31,866	32,661	33,720	35,044	36,633	39,282
5	33,455	34,250	35,309	36,633	38,222	40,871
6	35,309	36,104	37,163	38,487	40,076	42,725
7	37,163	37,958	39,017	40,341	41,930	44,579
8	39,017	39,812	40,871	42,195	43,784	46,433
9	40,871	41,666	42,725	44,049	45,638	48,287
10	42,725	43,519	44,579	45,903	47,492	50,141
11	44,579	35,373	46,433	47,757	49,346	51,995
12	46,433	47,227	48,287	49,611	51,200	53,849
15	48,287	49,081	50,141	51,465	53,054	55,703
20			51,995	53,319	54,908	57,557
24				55,173	56,762	59,410
27	50,141	50,935	53,849	57,027	58,616	61,264

TWENTY YEAR EARNING TOTALS

	\$822,953	\$828,301	\$861,093	\$886,779	\$916,970	\$966,770
--	-----------	-----------	-----------	-----------	-----------	-----------

NORTH SANPETE SCHOOL DISTRICT
TEACHER SALARY SCHEDULE
2007-2008

Step	BA	BA+30	BA+45	BA+60	MA	MA+45	MA+60	PhD
1	29,798	30,392	31,113	31,535	32,783	33,532	34,277	35,771
2	29,798	30,392	31,113	31,535	32,783	33,532	34,277	35,771
3	29,798	30,392	31,113	31,535	32,783	33,532	34,277	35,771
4	30,844	31,479	32,244	32,681	33,929	34,676	35,422	36,916
5	31,930	32,610	33,417	33,872	35,116	35,863	36,611	38,105
6	33,056	33,784	34,637	35,109	36,348	37,096	37,843	39,337
7	34,224	35,002	35,904	36,394	37,628	38,377	39,123	40,617
8	35,436	36,267	37,221	37,730	38,956	39,704	40,453	41,946
9	37,221	38,107	39,114	39,644	40,864	41,612	42,359	43,853
10		39,470	40,534	41,084	42,296	43,043	43,790	45,336
11			42,009	42,580	43,783	44,548	45,329	46,891
12				44,361	45,381	46,162	46,944	48,505
13					47,288	48,071	48,852	50,414
14								
15					48,464	49,246	50,026	51,590
16								
17								
18								
19								
20					49,640	50,421	51,202	52,765
21	41,489	42,535	43,754					
22								
23								
24								
25								
26								
27								
28		42,835	44,154	46,037	50,440	51,221	52,002	53,565

TWENTY YEAR EARNING TOTALS

\$292,105	\$337,895	\$388,419	\$438,060	\$598,042	\$609,415	\$620,785	\$643,588
-----------	-----------	-----------	-----------	-----------	-----------	-----------	-----------

NORTH SUMMIT SCHOOL DISTRICT
TEACHER SALARY SCHEDULE
2007-2008

Step	BA	BA+30	MA	MA+15	MA+45
1	31,095	31,913	32,730	33,548	35,183
2	31,504	32,321	33,139	33,956	35,591
3	31,913	32,730	33,548	34,365	36,000
4	33,275	34,093	34,910	35,728	37,363
5	34,638	35,455	36,273	37,090	38,725
6	36,000	36,818	37,635	38,453	40,088
7	37,363	38,180	38,998	39,815	41,450
8	38,725	39,543	40,360	41,178	42,813
9	40,088	40,905	41,723	42,540	44,175
10	41,450	42,268	43,085	43,902	45,537
11	42,813	43,630	44,447	45,265	46,900
12	44,175	44,992	45,810	46,627	48,262
13	44,175	46,355	47,172	47,990	49,625
14	44,175	46,355	48,535	49,352	50,987
15	44,175	46,355	48,535	50,715	52,350
16	44,175	47,717	48,535	50,715	53,712
17	44,175	47,717	49,897	50,715	55,075
18	44,175	47,717	49,897	52,077	55,075
19	44,175	49,080	49,897	52,077	55,075
20	44,175	49,080	51,260	52,077	56,437
21	44,175	49,080	51,260	53,440	56,437
22	44,175	49,080	51,260	53,440	56,437
23	44,175	49,080	52,622	53,440	57,800
24	44,175	49,080	52,622	54,802	57,800
25	44,175	49,080	52,622	54,802	57,800
26	44,175	49,080	52,622	54,802	59,162

TWENTY YEAR EARNING TOTALS

	\$796,439	\$833,224	\$856,386	\$878,185	\$920,423
--	-----------	-----------	-----------	-----------	-----------

PARK CITY SCHOOL DISTRICT
TEACHER SALARY SCHEDULE
2007-2008

Step	BA	BA+30	BA+55	MA	MA+45
1	34,423	35,569	36,883	38,524	41,119
2	34,423	35,569	36,883	38,524	41,119
3	34,423	35,569	36,883	38,524	41,119
4	35,967	37,170	38,547	40,263	42,895
5	37,512	38,770	40,209	42,001	44,673
6	39,059	40,370	41,874	43,742	46,450
7	40,604	41,968	43,534	45,484	48,231
8	42,150	43,568	45,196	47,218	50,005
9	43,695	45,170	46,858	48,959	51,784
10	43,695	46,769	48,520	50,703	53,560
11	43,695	48,371	50,183	52,437	55,338
12	43,695	49,969	51,846	54,178	57,120
13	43,695	51,569	53,509	55,919	58,900
14	43,695	51,569	53,509	57,659	60,680
15	43,695	51,569	53,509	57,659	60,680
16	43,695	51,569	53,509	57,659	60,680
17	45,879	54,147	56,184	60,542	63,714
18	45,879	54,147	56,184	60,542	63,714
19	45,879	54,147	56,184	60,542	63,714
20	45,879	56,854	58,993	63,570	66,900
21	45,879	56,854	58,993	63,570	66,900
22	45,879	56,854	58,993	63,570	66,900
23	45,879	56,854	58,993	63,570	66,900
24	45,879	56,854	58,993	63,570	66,900
25	45,879	56,854	58,993	66,748	70,245
26	45,879	56,854	58,993	66,748	70,245
27	45,879	56,854	58,993	66,748	70,245

TWENTY YEAR EARNING TOTALS

\$831,637	\$924,403	\$958,997	\$1,014,649	\$1,072,395
-----------	-----------	-----------	-------------	-------------

PIUTE SCHOOL DISTRICT
TEACHER SALARY SCHEDULE
2007-2008

RICH SCHOOL DISTRICT
TEACHER SALARY SCHEDULE
2007-2008

Step	BA	BA+15	BA+30	MA
1	30,360	31,427	32,535	33,685
2	30,896	31,983	33,112	34,285
3	31,432	32,540	33,690	34,885
4	32,247	33,388	34,570	35,798
5	33,386	34,572	35,798	37,073
6	34,569	35,800	37,074	38,398
7	35,797	37,075	38,398	39,772
8	37,072	38,399	39,773	41,200
9	38,396	39,774	41,200	42,682
10	39,771	41,202	42,682	44,221
11	41,199	42,684	44,221	45,819
12		44,223	45,819	47,478
13			47,478	49,201
14				50,990
20			49,201	52,847

TWENTY YEAR EARNING TOTALS

\$385,125	\$443,067	\$555,551	\$628,334
-----------	-----------	-----------	-----------

SAN JUAN SCHOOL DISTRICT
TEACHER SALARY SCHEDULE
2007-2008

SEVIER SCHOOL DISTRICT
TEACHER SALARY SCHEDULE
2007-2008

Step	BA	BA+20	MA	MA+30	PhD
1	29,335	30,727	32,971	34,363	35,750
2	29,335	30,727	32,971	34,363	35,750
3	30,264	31,716	34,044	35,496	36,660
4	31,303	32,815	35,227	36,739	37,951
5	32,390	33,962	36,470	38,042	39,302
6	32,688	34,332	36,948	38,580	39,888
7	33,996	35,700	38,424	40,116	41,484
8	35,364	37,128	39,960	41,724	43,140
9	36,780	38,616	41,556	43,392	44,868
10	38,244	40,164	43,224	45,132	46,656
11	39,768	41,772	44,952	46,932	48,528
12		43,440	46,752	48,804	50,472
13			48,624	50,760	52,488
20			50,568	52,788	54,588
25			51,068	53,288	55,088

TWENTY YEAR EARNING TOTALS

\$369,467	\$431,099	\$854,435	\$891,791	\$922,453
-----------	-----------	-----------	-----------	-----------

SOUTH SANPETE SCHOOL DISTRICT
TEACHER SALARY SCHEDULE
2007-2008

Step	BA	BA+30	BA+55	MA	MA+45	PhD
1	31,259	32,344	33,429	34,515	36,143	37,499
2	31,259	32,344	33,429	34,515	36,143	37,499
3	31,259	32,344	33,429	34,515	36,143	37,499
4	32,344	33,429	34,515	35,600	37,499	38,855
5	33,429	34,515	35,600	36,685	38,855	40,212
6	34,786	35,871	36,956	38,042	40,212	41,569
7	36,143	37,228	38,584	39,669	41,569	42,925
8	37,770	38,584	40,212	41,297	42,925	44,282
9	39,669	40,212	41,840	42,925	44,282	45,638
10		41,840	43,739	44,553	45,638	46,995
11			45,910	46,452	46,995	48,351
12			48,080	48,080	49,165	49,709
13				49,708	51,336	51,336
14						53,235
15						
16						
17						
18						
19						
20	N/A	N/A	48,989	50,650	52,310	54,247
21						
22						
23						
24						
25	N/A	N/A	49,899	51,592	53,284	55,259

TWENTY YEAR EARNING TOTALS

\$307,918	\$358,711	\$514,712	\$577,206	\$599,215	\$669,851
-----------	-----------	-----------	-----------	-----------	-----------

SOUTH SUMMIT SCHOOL DISTRICT
TEACHER SALARY SCHEDULE
2007-2008

Step	BA	BA+15	BA+30	BA+45	MA	PhD
1	34,105	34,641	35,176	35,980	37,588	40,267
2	34,641	35,176	35,980	36,784	38,392	41,071
3	35,176	35,980	36,784	37,588	39,195	41,874
4	35,980	36,784	37,588	38,392	39,999	42,678
5	36,784	37,588	38,392	39,195	40,802	43,481
6	37,588	38,392	39,195	39,999	41,607	44,286
7	38,392	39,195	39,999	40,802	42,410	45,089
8	39,195	39,999	40,802	41,607	43,214	45,893
9	39,999	40,802	41,607	42,410	44,017	46,696
10	40,802	41,607	42,410	43,214	44,821	47,500
11	41,607	42,410	43,214	44,017	45,624	48,303
12	42,410	43,214	44,017	44,821	46,429	49,108
13	43,214	44,017	44,821	45,624	47,233	49,913
14	44,017	44,821	45,624	46,429	48,036	50,716
15	44,821	45,624	46,429	47,233	48,839	51,519
16	46,280	46,429	47,233	48,036	49,643	52,323
17		47,888	48,036	48,839	50,446	53,126
18			49,495	49,643	51,250	53,930
19				51,102	52,054	54,734
20					53,513	56,193

TWENTY YEAR EARNING TOTALS

	\$635,011	\$694,567	\$756,802	\$821,715	\$905,112	\$958,700
--	-----------	-----------	-----------	-----------	-----------	-----------

TINTIC SCHOOL DISTRICT
TEACHER SALARY SCHEDULE
2007-2008

TOOELE SCHOOL DISTRICT
TEACHER SALARY SCHEDULE
2007-2008

Step	BA	BA + 30	BA + 55	MA	MA + 45
1	31,244	32,087	33,064	34,156	35,367
2	31,670	32,530	33,518	34,620	35,837
3	32,097	32,974	33,968	35,083	36,299
4	32,524	33,417	34,427	35,542	36,765
5	33,876	34,809	35,849	36,986	38,230
6	35,290	36,262	373,334	38,494	39,747
7	36,768	37,786	38,885	40,069	41,335
8	38,314	39,374	40,509	41,719	42,989
9	39,930	41,033	42,203	43,430	44,720
10	41,619	42,767	43,974	45,222	46,516
11	43,382	44,585	45,824	47,091	48,389
12	45,225	46,477	47,753	49,105	50,352
13	47,985	49,313	50,655	51,988	53,320
14	48,893	50,246	52,932	54,291	55,708

TWENTY YEAR EARNING TOTALS

\$832,175	\$855,136	\$888,487	\$913,542	\$939,822
-----------	-----------	-----------	-----------	-----------

UINTAH SCHOOL DISTRICT
TEACHER SALARY SCHEDULE
2007-2008

WASATCH SCHOOL DISTRICT
TEACHER SALARY SCHEDULE
2007-2008

Step	BA	BA+20	BA+36	MA	MA+30
1	30,989	32,424	33,932	35,519	37,115
2	31,941	33,437	35,006	36,663	38,267
3	32,923	34,479	36,118	37,845	39,454
4	33,936	35,560	37,265	39,070	40,681
5	34,985	36,674	38,451	40,339	41,948
6	36,065	37,826	39,676	41,648	43,256
7	37,184	39,014	40,945	43,002	44,608
8	38,337	40,242	42,252	44,402	46,002
9		41,512	43,603	45,848	47,444
10		42,825	45,004	47,344	48,930
11		44,179	46,451	48,894	50,468
12		45,580	47,946	50,495	52,054
13			50,163	52,834	54,468
14					
15					
16					
17					
18					
19					
20					
21					
22					
23					
24					
25				54,514	56,201
26					
27					
28			51,754		
TWENTY YEAR EARNING TOTALS					
	\$276,360	\$463,752	\$536,812	\$563,903	\$584,695

WASHINGTON SCHOOL DISTRICT
TEACHER SALARY SCHEDULE
2007-2008

Step	BA	BA+20	BA+30	MA	MA+20	MA+36	PhD
1	30,496	31,917	33,335	34,753	36,171	37,592	39,009
2	30,804	32,239	33,672	35,104	36,537	37,971	39,403
3	31,115	32,565	34,012	35,458	36,906	38,355	39,801
4	32,565	34,012	35,458	36,906	38,355	39,801	41,249
5	34,012	35,458	36,906	38,355	39,801	41,249	42,696
6	35,458	36,906	38,355	39,801	41,249	42,696	44,144
7	36,906	38,355	39,801	41,249	42,696	44,144	45,591
8	38,355	39,801	41,249	42,696	44,144	45,591	47,039
9	39,801	41,249	42,696	44,144	45,591	47,039	48,485
10		42,696	44,144	45,591	47,039	48,485	49,933
11			45,591	47,039	48,485	49,933	51,380
12				48,485	49,933	51,380	52,828
13					51,380	52,828	54,275
14						54,275	55,723
28		45,247	48,215	51,181	54,149	57,116	58,598

TWENTY YEAR EARNING TOTALS

	\$309,512	\$365,198	\$425,219	\$489,581	\$558,287	\$631,339	\$651,556
--	-----------	-----------	-----------	-----------	-----------	-----------	-----------

WAYNE SCHOOL DISTRICT
TEACHER SALARY SCHEDULE
2007-2008

WEBER SCHOOL DISTRICT
TEACHER SALARY SCHEDULE
2007-2008

Step	BA	BA + 55	MA	MA + 45	PhD
1	31,949	32,980	36,296	36,928	37,865
2	32,538	33,590	36,972	37,616	38,572
3	32,989	34,149	37,610	38,235	39,167
4	33,397	34,529	38,046	38,654	39,562
5	34,615	35,757	39,428	40,029	40,934
6	35,882	37,033	40,863	41,456	42,357
7	37,202	38,358	42,356	42,941	43,825
8	38,574	39,733	43,901	44,480	45,355
9	40,006	41,162	45,506	46,073	46,947
10	41,482	42,644	47,177	47,737	48,578
11	43,027	44,179	48,909	49,456	50,284
12	44,631	45,770	50,717	51,243	52,052
13	46,292	47,443	52,588	53,100	53,883
17	48,033	49,049	54,193	54,706	55,489
20	49,158	50,726	55,863	56,371	57,158
25		52,272	57,573	58,099	58,910

**TWENTY YEAR EARNING
TOTALS**

	\$589,775	\$607,102	\$670,425	\$679,025	\$692,028
--	-----------	-----------	-----------	-----------	-----------

*Note \$700.00 Stipend added if National Board Certified.

1.50% Added to Each Step; and another
1.20% added to Step 25; then
\$2,500.00 added to each step

SALT LAKE CITY SCHOOL DISTRICT
TEACHER SALARY SCHEDULE
2007-2008

Step	BA	BA + 20	BA + 40	MA	MA + 20	MA + 40	PhD
1	34,968	36,756	38,630	39,400	40,829	45,307	66,431
2	36,424	38,120	40,009	40,775	42,264	45,307	66,431
3	37,939	39,569	41,470	42,233	43,767	45,307	66,431
4	39,494	41,029	42,950	43,717	45,295	46,867	66,431
5	41,101	42,565	44,482	45,273	46,878	48,473	66,431
6	42,790	44,175	46,116	46,865	48,515	50,158	66,431
7	44,553	45,831	47,754	48,523	50,223	51,925	66,431
8	46,341	47,569	49,519	50,258	51,988	53,716	66,431
9	48,905	49,381	51,303	52,047	53,827	55,604	66,431
10	48,905	51,919	53,168	53,884	55,702	57,519	66,431
11	48,905	51,919	55,802	55,802	57,669	59,539	66,431
12	48,905	51,919	55,802	58,573	59,726	61,632	66,431
13	48,905	51,919	55,802	58,573	62,610	64,614	66,431

TWENTY YEAR EARNING TOTALS

\$910,470	\$956,104	\$1,013,421	\$1,045,934	\$1,097,563	\$1,138,266	\$1,328,620
-----------	-----------	-------------	-------------	-------------	-------------	-------------

OGDEN SCHOOL DISTRICT
TEACHER SALARY SCHEDULE
2007-2008

Step	BA	BA + 20	MA	MA + 30
1	32,123	33,728	35,411	37,186
2	32,123	33,728	35,411	37,186
3	32,797	34,436	36,163	37,978
4	33,317	34,975	36,733	38,577
5	34,476	36,200	38,024	39,937
6	35,681	37,473	39,353	41,340
7	36,932	38,789	40,743	42,797
8	38,225	40,153	42,180	44,316
9	39,567	41,563	43,667	45,883
10	40,961	43,036	45,212	47,509
11	42,408	44,555	46,814	49,195
12	43,902	46,133	48,477	50,944
13	45,462	47,766	50,201	52,760
14	46,263	49,462	51,986	54,638
15	48,799	52,415	55,085	57,891
16	49,737	53,425	56,149	59,010

TWENTY YEAR EARNING TOTALS

\$831,721	\$881,537	\$926,205	\$973,187
-----------	-----------	-----------	-----------

Note:

The Teachers Salary Schedule(s) for 07-08:

- Separates the 4 lanes (2006-07 schedule) into 4 separate
- a. schedules
- b. Adds a 1.37% COLA to the base (181.5 day) amount
- c. Calculates the value of the Quality Teaching days at the daily rate
- d. Adds the Educator Salary Adjustment amount
- e. Shows the total of the three component amounts

PROVO SCHOOL DISTRICT
TEACHER SALARY SCHEDULE
2007-2008

Years	BA	BA+20	BA+36	BA+50	MA	MA+30	MA+60	PhD
1	29,329	29,860	30,392	30,926	31,192	31,989	32,786	33,586
2	29,860	30,392	30,926	31,457	31,723	32,520	33,317	34,117
3	30,474	31,244	32,271	32,786	34,070	34,843	35,870	37,157
4	32,123	32,890	33,657	34,169	35,703	36,473	37,240	38,773
5	33,501	34,265	35,284	35,793	37,064	37,828	38,847	40,118
6	34,936	35,703	38,727	37,240	38,773	39,540	40,565	41,844
7	36,727	37,494	38,519	39,031	40,307	41,877	42,099	43,635
8	38,500	39,261	40,277	40,787	42,310	43,071	44,087	45,610
9	38,500	41,039	42,055	42,562	44,087	44,849	45,865	47,133
10	38,500	41,039	43,811	44,320	45,843	46,350	47,363	48,886
11	38,500	41,039	43,937	46,481	48,010	48,772	49,793	51,318
12	38,500	41,039	44,063	46,615	48,147	48,914	49,935	51,466
13	38,500	41,039	44,353	46,925	48,467	49,240	50,267	51,809
14	38,500	41,039	44,564	47,147	48,697	49,472	50,505	52,065
15	38,500	41,039	45,717	48,264	49,793	50,554	51,573	53,099
16	38,500	41,039	46,807	49,418	50,982	51,795	52,809	54,373
17	38,500	41,039	47,243	49,878	51,458	52,247	53,302	54,882
18	38,500	41,039	47,462	50,108	51,696	52,488	53,548	55,137
19	38,500	41,039	47,678	50,338	51,935	52,732	53,795	55,392
20	38,500	41,039	48,297	51,192	52,776	53,565	54,619	56,200
21	38,500	41,039	48,741	51,666	53,263	54,060	55,126	56,720
22	38,500	41,039	48,966	51,905	53,507	54,310	55,378	56,983
23	38,500	41,039	49,187	52,140	53,754	54,559	55,633	57,243
24	38,500	41,039	49,412	53,187	54,805	55,816	56,895	58,311
25	38,500	41,039	49,634	53,428	55,055	55,868	56,950	58,577
26	38,500	41,039	50,080	53,910	55,550	56,372	57,465	59,106
27	38,500	41,039	50,524	54,389	56,046	56,876	57,980	59,634
28	38,500	41,039	50,623	55,465	57,076	57,884	58,961	60,574

TWENTY YEAR EARNING TOTALS

\$727,450	\$763,577	\$826,040	\$855,437	\$883,033	\$889,119	\$918,185	\$946,600
-----------	-----------	-----------	-----------	-----------	-----------	-----------	-----------

LOGAN SCHOOL DISTRICT
TEACHER SALARY SCHEDULE
2007-2008

Step	BA	BA+20	MA	MA+30	PhD
1	31,252	32,284	33,208	33,460	34,852
2	32,260	33,316	34,384	35,008	36,244
3	33,316	34,384	35,572	36,604	37,636
4	34,792	35,884	37,216	38,140	38,944
5	36,352	37,564	38,992	39,988	40,336
6	37,756	38,932	40,372	41,368	41,848
7	39,040	40,348	41,896	42,976	43,360
8	40,384	41,800	43,312	44,512	45,016
9	41,848	43,228	44,908	46,012	46,672
10	43,300	44,560	46,372	47,572	48,424
11		46,012	47,836	49,096	50,320
12		47,560	49,252	50,632	52,192
13		49,324	51,004	52,576	54,196
14		51,244	52,888	54,556	56,284
15			54,916	56,692	58,396
16					
17					
18					
19					
20			55,900	57,712	59,452
21					
22					
23					
24					
25			56,884	58,720	60,496
TWENTY YEAR EARNING TOTALS					
	\$370,300	\$576,440	\$708,028	\$726,904	\$744,172

MURRAY SCHOOL DISTRICT
TEACHER SALARY SCHEDULE
2007-2008

Step	BA	BA + 30	BA + 45	MA	MA + 40
1	33,492	34,368	35,337	37,512	38,912
1.5	33,492	34,368	35,337	37,512	38,912
2	33,492	34,368	35,337	37,512	38,912
2.5	33,492	34,368	35,337	37,512	38,912
3	33,492	34,368	35,337	37,512	38,912
3.5	34,154	35,049	36,039	38,259	39,688
4	34,816	35,729	36,739	39,007	40,465
4.5	35,507	36,440	37,472	39,785	41,274
5	36,200	37,150	38,202	40,565	42,083
5.5	36,918	37,889	38,965	41,376	42,925
6	37,639	38,628	39,725	42,185	43,770
6.5	38,386	39,399	40,519	43,031	44,647
7	39,136	40,169	41,313	43,876	45,528
7.5	39,918	40,971	42,140	44,758	46,442
8	40,700	41,774	42,966	45,638	47,356
8.5	41,513	42,612	43,828	46,555	48,311
9	42,327	43,449	44,689	47,475	49,266
9.5		44,320	45,588	48,430	50,259
10		45,191	46,484	49,387	51,254
10.5		46,100	47,421	50,383	52,288
11		47,008	48,355	51,379	53,325
11.5			49,331	52,416	54,404
12			50,304	53,456	55,482
12.5			51,321	54,537	56,608
13			52,898	55,619	57,731
13.5				56,747	58,902
14				58,711	61,019
14.5					
15					
15.5					
16					
16.5					
17	43,539	48,362	54,488	60,471	62,852

TWENTY YEAR EARNING TOTALS

\$505,450	\$625,650	\$765,638	\$881,718	\$915,423
-----------	-----------	-----------	-----------	-----------

UTAH SCHOOLS FOR THE DEAF AND BLIND
TEACHER SALARY SCHEDULE
2007-2008